

PeaZip

Open source, portable file and archive manager

Giorgio Tani

`<giorgio.tani.software@gmail.com>`

PeaZip: Open source, portable file and archive manager

by Giorgio Tani

Publication date 2013-11-22

Abstract

Translation: Giorgio Tani

PeaZip official site:

<http://www.peazip.org/>



Licensing:

Present documentation is released under GNU GFDL License;

PeaZip executable implementation is released under GNU LGPL License.

For more information about the licenses:

GNU GFDL License, see <http://www.gnu.org/licenses/fdl.txt> .

GNU LGPL License, see <http://www.gnu.org/licenses/lgpl.txt> .

Table of Contents

I. Basic	1
1. How to	3
Extract single or multiple archives	3
Extract selected content from archive	4
Browse or extract password protected archive	4
Create archives	4
Add content to existing archive	4
Span archive in smaller files of a given size	4
Create encrypted archives	4
Archive items in separate archives at once	5
Convert single or multiple archives	5
Directly create an archive of specified format with given compression level	5
Save a task definition as script for future batch use	5
Configure PeaZip	5
2. What is PeaZip	6
II. Advanced	8
3. File manager	10
Main menu	10
Tool Bar	13
Address Bar	15
Navigation Bar	17
Status Bar	17
Drag and Drop	18
File Browser	19
Context Menu	21
File manager's keyboard shortcuts	24
File manager's mouse controls	27
Enter password (F9)	27
Password manager (Shift+F9)	28
Create keyfile (Ctrl+F9)	29
Set advanced filters (Ctrl+Shift+F9)	30
File tools	31
4. Extract archives	34
Extract	35
Advanced	36
Console, Schedule	37
Note about extraction	37
5. Create / convert archives	38
Archive	38
Advanced	41
Console	43
Keyboard shortcuts for archive extraction and creation	44
Mouse controls for archive extraction and creation	45
III. Expert	46
6. Save and schedule tasks	48
7. PeaLauncher	50
8. Settings	52
General (1)	52
General (2)	53
Archive manager	54
File Tools	55
Customize theme	55
Advanced settings editing	56
IV. Additional information	57
9. Supported formats	59

10. Customisation and scripting	61
11. Translations	63
12. Notes	65
SendTo and context menu	65
Creation of RAR archives	65
ACE archives	66
Office, Open Office, MSI and EXE files	66
UTF-8 support	66
Compilation, build and porting	67
QT issues	67
Install/uninstall on Linux	67
Index	69

List of Tables

3.1. Functional keys	24
3.2. Extract without confirmation (from browser and extraction interface)	24
3.3. Extract	25
3.4. Extract and open / preview (on selected objects while browsing archives)	25
3.5. File Tools (when browsing the filesystem)	25
3.6. Navigation	25
3.7. Bars	25
3.8. Sort Column (*)	26
3.9. Views (**)	26
3.10. Modify	26
5.1. Operations	44
5.2. Options	44
5.3. Archive types	44
5.4. File Tools	44
5.5. Archive layout-related (the archive list is selected)	44
5.6. Extract without confirmation (from browser and extraction interface)	45

Part I. Basic

Table of Contents

1. How to ...	3
Extract single or multiple archives	3
Extract selected content from archive	4
Browse or extract password protected archive	4
Create archives	4
Add content to existing archive	4
Span archive in smaller files of a given size	4
Create encrypted archives	4
Archive items in separate archives at once	5
Convert single or multiple archives	5
Directly create an archive of specified format with given compression level	5
Save a task definition as script for future batch use	5
Configure PeaZip	5
2. What is PeaZip	6

Chapter 1. How to ...

This mini-tutorial introduces the most common operations that can be performed through *PeaZip*, following chapters contains a more detailed explanation of the application and of terms used here.

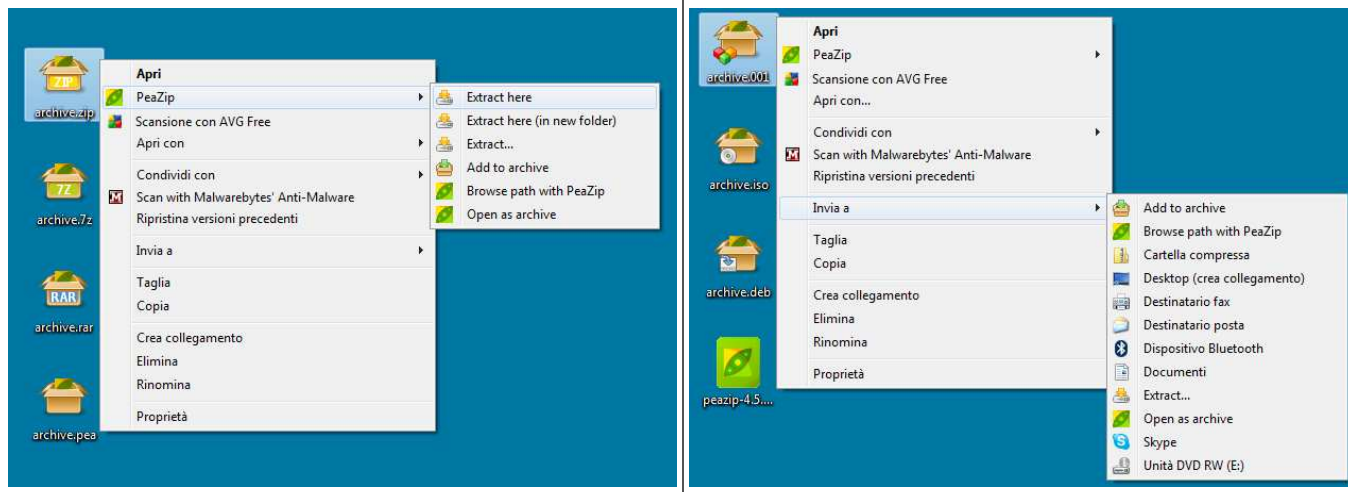


Image 1: high resolution icons, SendTo and context menu integration.

The context menu is optionally cascaded, only for systems 7 or newer that supports cascading menus and display icons through static registry entry, which is now recommended over COM methods.

System integration can be customized running the installer or in *PeaZip* in Options > System integration, choosing “Custom installation”.

Extract single or multiple archives

- **From the system**
 - › rightclick on the archive(s) and in system's context menu click “Extract here” or “Extract here (in new folder)” to extract with no further interaction
 - › otherwise use “Extract...” menu entry for having more options: output path, password, extract files to a new directory, chose to skip, rename or overwrite existing files etc.
- **Open an archive in PeaZip**, i.e. with doubleclick, or drag an archive on *PeaZip*'s window or icon
 - › click on “Extract” in toolbar or in context menu to extract only selected objects trough the confirmation dialog allowing to set all options (output path, password, naming policy, extract to a new directory etc)
 - › click “Extract all to...” button (shortcut **Ctrl+E** or **F12**) to directly extract the entire archive to the specified folder, or click the quick extraction dropdown button on its right to extract into most common destinations skipping confirmation dialog, and to set most important options; shortcuts: **Ctrl+Alt+E** extracts archive in its current folder; **Ctrl+Shift+E** extracts to desktop; **Ctrl+Alt+Shift+E** extracts to documents; **Ctrl+0** extracts to the previous path, **Ctrl+1..8** extracts all to 1..8 bookmark's path (if defined)
 - › drag files and folders to the desired destination; dragging with right mouse button, or pressing **Ctrl**, will popup a menu allowing to chose if to extract all the archive or only the selected content, and to extract to a fresh new folder or not (please read chapter about drag and drop in *PeaZip* for more information).
- **Open PeaZip**, select one or more archives and click “Extract” in toolbar or context menu, or use quick extraction destinations as explained at the previous point. Conditional drag and drop can be used also in this case (dragging with right mouse button or pressing **Ctrl**) to extract the whole archive, optionally in a new directory.

Extract selected content from archive

Open an archive in PeaZip, i.e. with doubleclick, or drag an archive on PeaZip's window or icon

- click “Extract” in toolbar: only selected items will be extracted
- drag files and folders to the desired destination, only selected content will be extracted
- rightclick and in “Extract” group of the context menu click “Extract selected” (to extract only selected items) or “Extract displayed” (to extract content of current directory or of current search filter)

Browse or extract password protected archive

Click on the padlock icon to enter a password and optionally a keyfile. The icon is featured both in *PeaZip*'s file browser's status bar and in the archive extraction interface; once the password is set the icon will change color.



Tip

Hint: to extract multi volume (spanned) archives, place all volumes in the same folder and use “Extract all” (from context menu or program's GUI) on the first volume, that is usually identifiable for the extension .001, or .r01, .z01 and similar.

Create archives

- **From the system**
 - › rightclick on objects to be archived and click on “Add to archive” in context menu or SendTo menu. It will open the archive creation confirmation dialog, more options are available in “Advanced” tab; click [OK] to create the archive.
 - › alternatively, drag files/folders to *PeaZip*'s window or shortcut; the same archive creation interface will be shown.
- **From *PeaZip*** select objects to be archived and click on “[Add]” button; the same archive creation interface will be shown.

Add content to existing archive

Open an archive in PeaZip (i.e. with doubleclick, or drag an archive on *PeaZip*'s window or icon), then drag files and folders to be added in the archive (or click on “[Add]” button and use application's context menu to add objects to the archive). It will open the archive creation confirmation dialog, click [OK] to update the existing archive.

Span archive in smaller files of a given size

While creating an archive as explained in previous points, click on “Single volume” dropdown menu to select a size for output files (volumes) the archive will be split in. Most common types of archives supports this option.

Create encrypted archives

Click on the padlock icon to enter a password and optionally a keyfile; the icon is featured both in *PeaZip*'s file browser's status bar and in archive creation interface.

To hide names of files and directories contained in the archive check “Encrypt also filenames”, please note that it will be applied only if the archive will be created in a format supporting this function, like 7Z and ARC.



Tip

Note that in archive creation interface, alongside the padlock icon, there is a colour line (red for weak password, green for strong password) at the bottom of the form to visually inform if encryption is set and if the current archive format supports encryption.

Archive items in separate archives at once

Add objects to be archived (with *PeaZip*'s “[Add]” button, or from system's context menu or SendTo menu) and before confirming with “[Ok]” check “Add each object to a separate archive” option.

Convert single or multiple archives

From *PeaZip* select archives to be converted and click on “Convert” on toolbar or context menu, non-archive files and folders can be added as well, the difference being in archives being extracted before compression stage. Using the “Convert existing archives” switch in conjunction with “Add each object to a separate archive” (default) it performs a mass conversion of listed archives, without that switch archive conversion is meant to consolidate input data in a single archive, improving compression efficiency because it allows recompression of the original data from its uncompressed form.

Directly create an archive of specified format with given compression level

Using “System integration” procedure in Options > Settings it is possible to enable context menu entries to directly add selected files/folders to a ZIP, 7Z or self extracting archive. For Zip and 7Z formats it is also possible to enable context menu entries to compress to fastest, normal or ultra level, bypassing the default compression level for the selected format.

Save a task definition as script for future batch use

Compression/conversion and extraction interfaces features a “Console” tab, allowing to translate the task being defined in the GUI into a command line, that can be edited, tested and saved as a script for future use - i.e. automating a recurring task (as a backup), or for fine tuning, or further inspection, or for learning purpose.

Configure PeaZip

- Options > Localization (and in Options > Settings, first tab) allows to set application's **language**
- Options > Settings allows to edit applications' settings
- Options > Theme allows to change application's icons and appearance
- Options > System integration starts a procedure to configure file associations, context menu and SendTo menu entries (on Windows)
- Organize menu contains entry to customize, enable or disable browser's features, like toolbar, address bar, navigation bar, etc

Chapter 2. What is PeaZip

PeaZip is a general purpose file and archive manager application, aiming to provide a cross-platform graphical interface for many Open Source archiving and compression utilities in order to handle most of available archiving formats like 7Z, RAR (extraction), TAR, ZIP and many other ones, see “Supported formats [59]” chapter for more information.

The program features powerful and flexible inclusion/exclusion filters and search tools, provide optional two factor authentication through password and keyfile, and allows to deeply fine tune the task's definitions, exposing through a single, consistent frontend GUI the options of underlying applications.

The list of objects to be archived or extracted can be saved for future use, to speed up backup and restore tasks.

Also the resulting command for archive creation and extraction can be saved, to get the full control on task's definition, helping the user in bridging the gap between GUI and console applications to get the best of both worlds.

A detailed log is available after each operation.

PeaZip also collects a set of handy file management tools: robust file copy, split and join files, fast or secure file deletion, calculation of a wide set of checksums and hashes over selected files, byte-to-byte comparison of two files, web search etc.

PeaZip can be used as file manager, or can be used from **context** and **SendTo** menu.

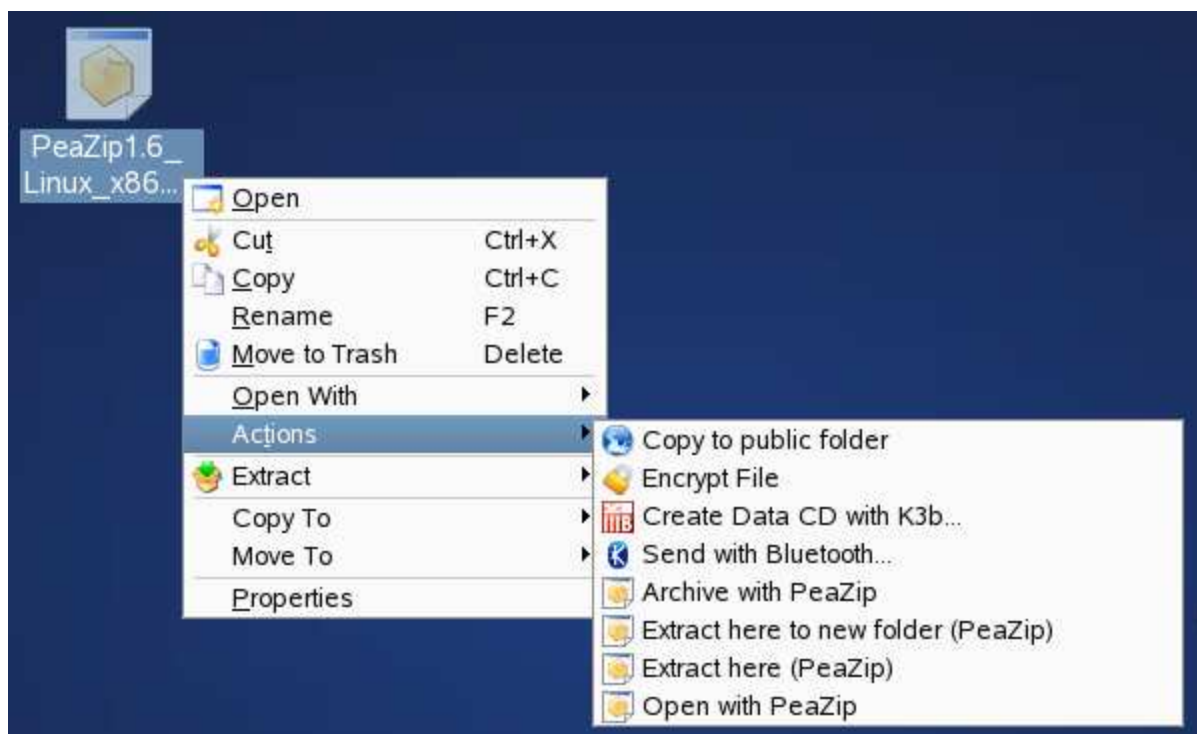
File associations and menu entries (both for context and SendTo menu) can be changed running the setup program any time it is needed.



Tip

*Hint: on Windows systems you can run the installation as administrator with **runas** command, or Run as entry in system's context menu; on Windows UAC will automatically ask for running the process as administrator.*

If no system integration is preferred, **PeaZip Portable** is available as standalone application, not needing installation and not modifying the host system; both packages are available on application's website main page: <http://www.peazip.org/>



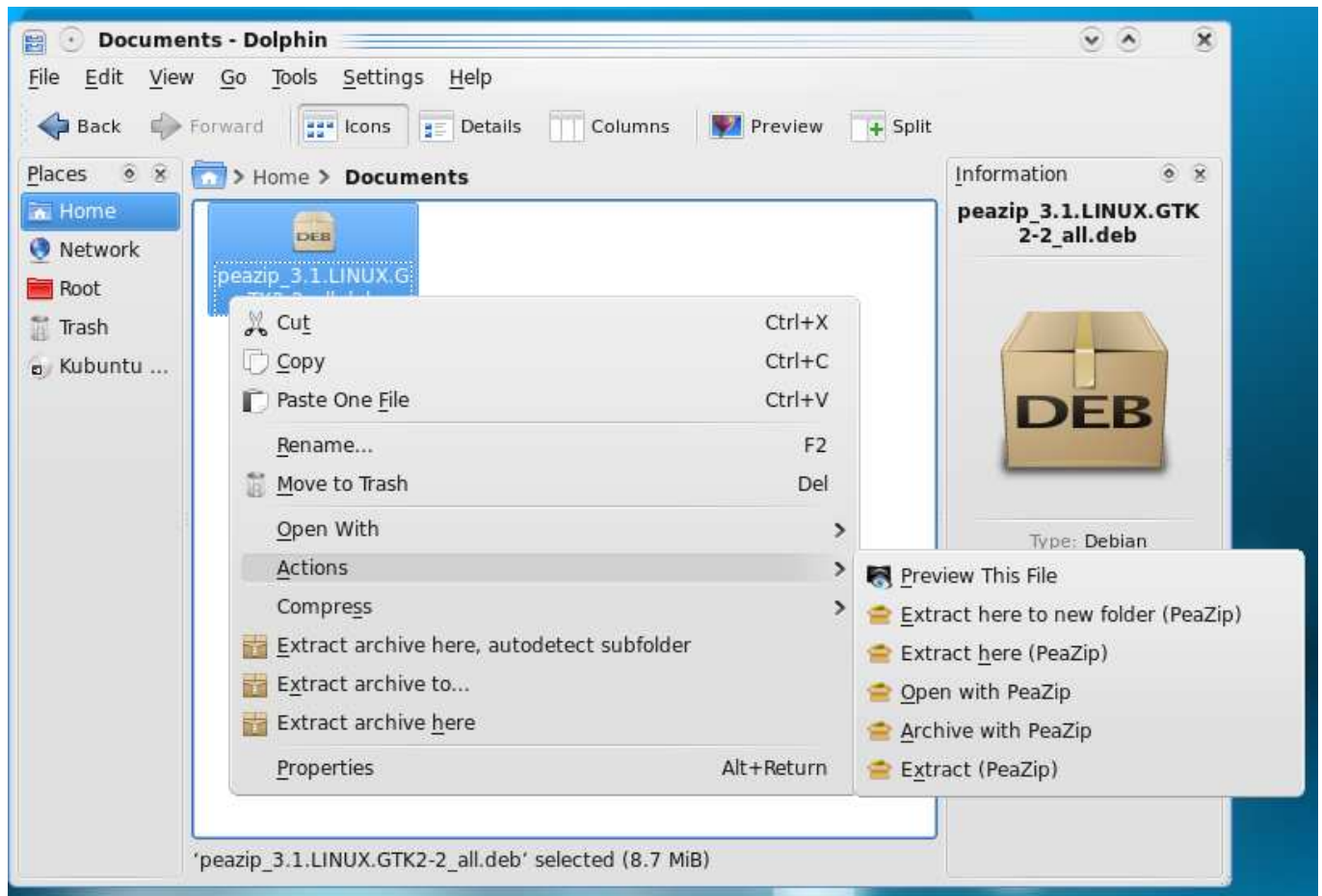


Image 2a, 2b: menu integration in Linux KDE3 and KDE4; for integrating under Gnome copy the “Archiving” folder placed in PeaZip/Freedesktop_integration/nautilus-scripts to system's Nautilus script's folder (in most versions open “Scripts” menu in system's context menu, and select “Open script's folder”).

All the open source backend applications included in base packages contain only open source software released under OSI-approved licenses.

Handling formats not supported through open source software (presently, only ACE archives) requires installing separately available plugin, which contains closed source, royalty free binaries.

The list of available plugin can be browsed on peazip.org “Addons” section.

Part II. Advanced

Table of Contents

3. File manager	10
Main menu	10
Tool Bar	13
Address Bar	15
Navigation Bar	17
Status Bar	17
Drag and Drop	18
File Browser	19
Context Menu	21
File manager's keyboard shortcuts	24
File manager's mouse controls	27
Enter password (F9)	27
Password manager (Shift+F9)	28
Create keyfile (Ctrl+F9)	29
Set advanced filters (Ctrl+Shift+F9)	30
File tools	31
4. Extract archives	34
Extract	35
Advanced	36
Console, Schedule	37
Note about extraction	37
5. Create / convert archives	38
Archive	38
Advanced	41
Console	43
Keyboard shortcuts for archive extraction and creation	44
Mouse controls for archive extraction and creation	45

Chapter 3. File manager

The application starts by default with **file manager** interface, pointing to the last visited directory, for navigation in the filesystem and in archives.

On start-up, PeaZip parses the input parameters trying to understand to what function they should be passed to (i.e. to open an archive for browsing, or adding selected objects to a new archive), see “Customisation and scripting [61]” chapter for the startup parameters that can be passed to PeaZip, if you want to use it in scripts or customize system's integration (registry entries, SendTo menu links etc...)

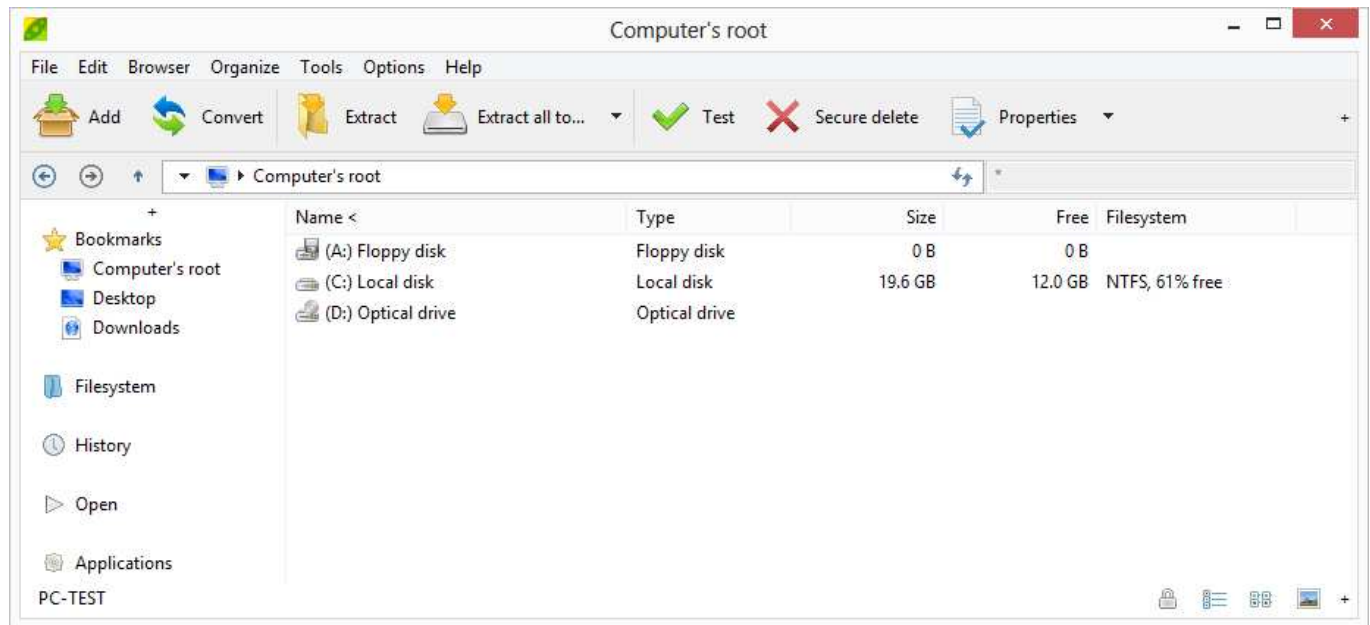


Image 3: PeaZip's file and archive browser.

On the left, the navigation bar, the plus sign allows to toggle the view with a classic tree and alphabetical list of functions.

“Bookmarks” group contains user's bookmarked archives and folders

“Filesystem” group shows a tree of mounted units and default system's locations

“Recent archives” shows recently browsed archives

“Open” group launches directory selection, file selection, and search dialog

“Applications” group allows to launch most common operations, like opening web search, Run, favourite applications or websites/webservices that can be defined by the user (Organize Applications), to be launched from navigation bar or for opening selected files/folders.

Main menu

“**File**” submenu, contains primary application's functions.

In the first area, **Create archive** activates the archive creation interface, which allows to add files and folders to the archive's layout and to save, restore and merge layouts for further use.

In the second area are featured: bookmarks, history (can be switched off for privacy in Options > Settings); Open path and Open archive entries, invoking standard file and directory selection dialog respectively; Search and drag here which open standard system's search dialog, to search files on the system and then drag them to *PeaZip*.

“Web search” allow searching for the selected filename (or an arbitrary string) on different web based services, as Google and Yahoo search engines, Wikipedia, etc, optionally on multiple websites at once.

Web search feature can help users in case of any doubt or need of any additional information about the object before archiving it or before extracting it from the archive, or for comparing an object (date, size, checksums etc...) with other known online sources. Web search can also help in finding files (i.e. to replace broken/incomplete downloads) on various sources: torrents, upload services, p2p.

Please remember to download only trusted files from trusted sources, and to refer to the respective Author of each content for any information about the copyright status.

Reduce to tray entry send *PeaZip* to tray area; right clicking on the tray icon it is possible to resume the program, or access most common program's functions.

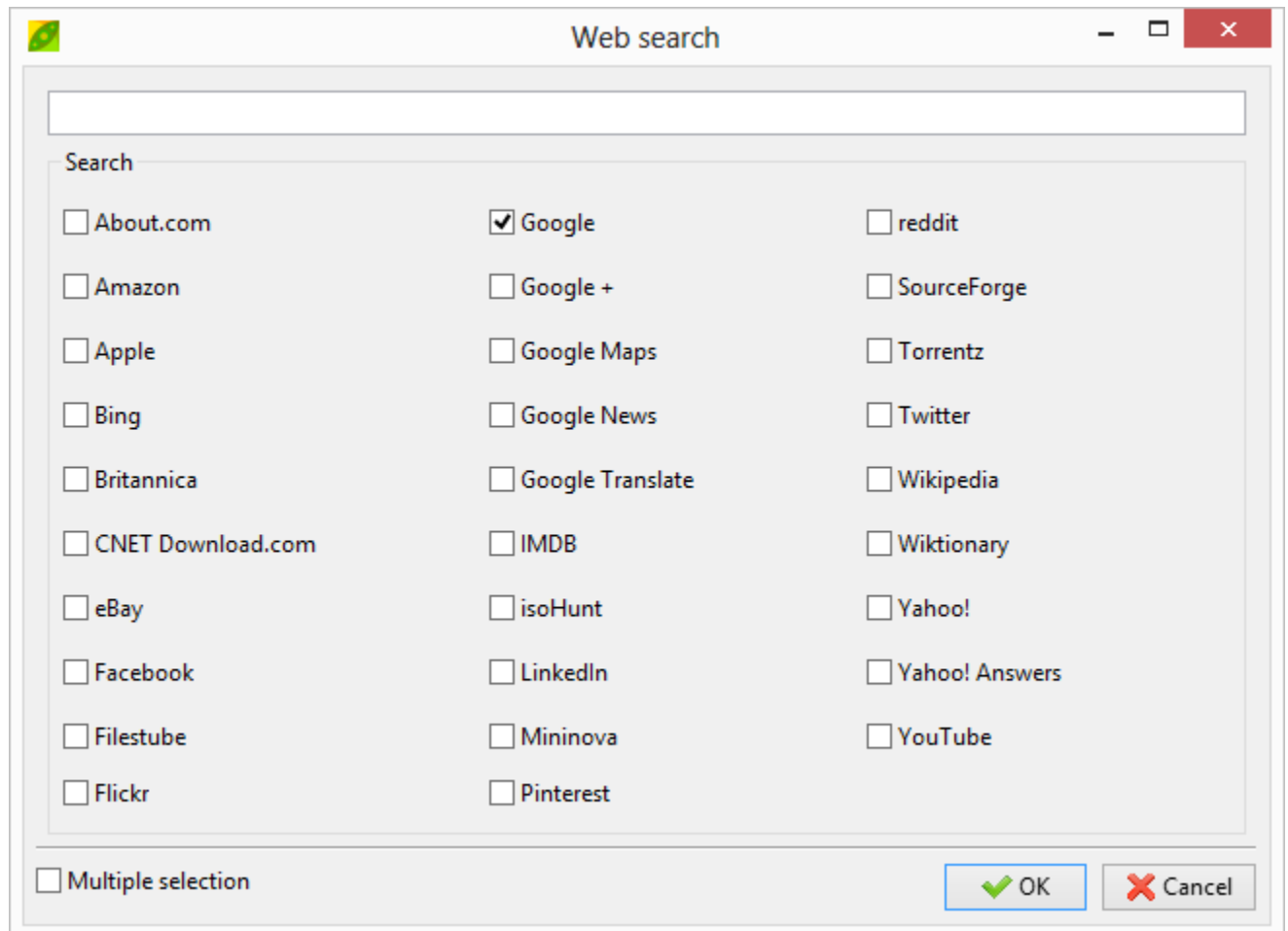


Image 4: web search form, optionally it is possible to search on multiple engines at once

“**Edit**” submenu changes the selection of currently displayed files, for date, size, extension, attributes etc... It works either for the file/archive browser or for the archiving and extraction interfaces.

“**Browser**” submenu, featured only when file manager is displayed, contains

- jump to archiving and extraction layout interfaces
- search (in *PeaZip*), **F3**
- up one level (**Alt+Up**)
- go to archive's or system's root level (**F4**), Desktop (**Ctrl+F4**), Home (**Shift+F4**)
- **refresh (F5)** forcing refresh of currently displayed content
- **toggle browser/flat view (F6)**, flat view displays all together the objects contained in the current path or in the archive

“**Organize**” menu allows to deeply customise the file/archive manager's aspect

- Dock the application to screen angles/sides (**Ctrl+Alt+numeric pad arrows**), **F11** full screen, **Ctrl+F11** immersive

- Customize or hide tool bar and address bar, swap tool bar and address bar to give visual prominence either to file navigation or archive manager's functions.
- Customize browser interface: display details (default) or as list, use row selection or not (default), select columns to display, select sort column...
- Customize or hide the status bar to display different views: none, plain status bar, details, bookmarks, recent archives, history, clipboard
- Display picture thumbnails or generic icon - only for file browser, browsing archives icons are displayed
- Use classic search or simple search (default), more similar to natural language
- Set default search to recursive (search in subfolders) or not recursive ("search here")

In this menu is also featured **Organize applications** entry, that opens a modal form allowing to edit two sets of up to 24 applications (or scripts, or commands, or websites) to be used to open files overriding system's file associations.

Applications can be sorted dragging up or down the application's number in the list; rightclick to select, edit or remove applications, and enter descriptions.

Some commonly featured applications are preset and can be recalled with "Reset Applications" button.

Applications are saved to a separate configuration file `custedit.txt` and are not cancelled with application's reset (as well as "Bookmarks" list).

- "Basic edit" set allows editing custom application with ease, selecting or typing an application or command to be used to open the file. It is also possible to enter parameters after command or application name; after the "Executable or command" string it will be passed a space and the input file name.



Note

in the first group can be defined also websites/webservices to pass the filename to as parameter; in those cases (detected by PeaZip if the name of the app starts for www. or http:// or https://) only the filename is passed, not the full qualified name (path+filename) as for local applications.

- "Advanced edit" set allows instead a bit more complex syntax, providing a string to be entered before and after the input file name (it's up to the user decide if spaces between strings and file name are needed).



Note

by default antivirus / antimalware scanners are defined in "Advanced edit" set, because some of them requires a bit complex syntax, but it is only a convention. In the last column of the table it is possible to enter the syntax for the application when no file is passed as parameter, as this case can require a different syntax, or even invoking a different executable



Note

syntax's examples of preset applications can be used as model to start customizing entries in both sets; clicking an entry in "Advanced edit" set will show a line displaying complete command entered, with the pseudocode "%f" representing the input file name position in the command string.

"Tools" submenu contains:

- **Password Manager (Shift+F9)** encrypted password manager
- **Enter password / Keyfile (F9)** sets the default password (and optionally keyfile, if two factor authentication is desired) to be used in browsing, testing, extraction and archive creation

- **Create random password / keyfile (Ctrl+F9)** allows to sample entropy from the system and from user's actions to generate a random keyfile; this utility can be also used to generate random passwords to be used in any other application/website/etc
- **Use advanced filters (Shift+Ctrl+F9)** sets multiple inclusion and exclusion filters to be used in browsing, testing, extraction and archive creation; filters are applied only to archive formats managed through 7z backend interface, see “Supported formats [59]” chapter
- **Saved task definition scripts** opens a folder containing task definitions saved as script files, created from archiving or extraction interfaces, that can be run for unattended repetition of user-defined operations
- **System benchmark** utility to rate the host system in terms of MIPS (millions of integer instructions per second) and Core 2 Duo equivalent speed in MHz

“Options” submenu contains:

- **Run as administrator** (Windows Vista or more recent), closes current instance and opens a new one, prompting UAC elevation request, in order to work in protected paths;
- **Run as different user** (Windows only), closes current instance and opens a new one with alternative user profile;
- **Localization**, to quickly change applications language;
- **Settings**, to customize application's behaviour.
- **System integration**, to customize file associations, context menu and SendTo menu entries (Windows only).
- **Theme**, to customize application's aspect.

“Help” submenu points to update check, project's website and to most up to date documentation available, *PeaZip* help (**F1**), and a short tutorial introducing most common operations.

From this submenu it is also possible to go to PeaZip's donation page, which also allows to donate to some suggested worldwide charitable organizations.

Tool Bar

On the right side of application's toolbar the “+” area allows to toggle the toolbar between Archive Manager, File Manager, and Image manager.

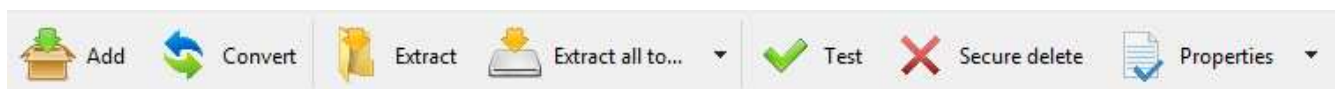


Image 5a: Archive Manager tool bar.

Add, Convert and Extract leaves file browser and brings to the proper functional dialog, while “Extract all to...” button directly shows output path selection for direct extraction without leaving the file browser.

On the right of the “Extract all to...” button, the dropdown shows other quick extraction functions, allowing to extract the entire archive to most commonly used paths and to check and set most common options.

On the right of “Properties” button it is featured a second dropdown showing additional functions, i.e. copy, move, delete, add to bookmarks...

The **Archive Manager** toolbar features:

- **Add**
 - › While browsing the filesystem, the button adds selected files and folders to the current archive layout; before confirming the creation of the archive with “[Ok]” it is possible to modify the list of objects to be archived (dragging them

or using the context menu) as well as other options, output name etc, see “Create / convert archives [38]” chapter for more information.

- › While browsing an existing (writeable) archive, the button brings to the archive update interface; it is possible to add files and folders to be added to the archive as in the previous case, dragging them or using context menu.
- **Convert**
 - › Convert selected archives in the desired format (non-archive files and folders can be added as well, the difference being in archives being extracted before compression stage). Using with “Add each object to a separate archive” (default) it performs a mass conversion of listed archives, without that switch archive conversion is meant to consolidate input data in a single archive, improving compression efficiency because it allows recompression of the original data from its uncompressed form.
- **Extract**
 - › While browsing the filesystem, extracts all selected archives; before confirming the extraction with “[Ok]” it is possible to modify output path and other options, and to add other archives to be extracted.
 - › While browsing an archive, extracts the selected items or all the displayed items if nothing is selected, like Win-Rar/7-Zip (it is possible to be sure to extract the whole archive using context menu's “Extract all entry”, or clicking “Extract all” link in extraction interface); before confirming the extraction with “[Ok]” it is possible to modify output path and other options.
- **Extract all to...**
 - › Always extract the whole archive, asking only for the output path without leaving file/archive browser.
- On the right of “Extract all to...” button, an arrow shows a menu with functions to directly extract all the content of the archive to most common destinations without further interaction with extraction confirmation interface
 - › In the upper area are listed most common extraction operations: extract all here, extract all to (allowing to select output directory), extract all to desktop, extract all to documents, extract to 1..3° bookmarked paths (if defined), and extract to default extraction path. Only first, second and third bookmarks are shown as quick extraction destination to not clutter the menu, but bookmarks 1..8 are accessible with keyboard shortcuts **Ctrl+1..8**. **Ctrl+0** extracts to the previous output path.
 - › In the lower area it is possible to set most common extraction options: extract to new folder, naming policy (only for formats supported through 7z frontend), open output path after the task completes, set default extraction path
- **Test**
 - › Test selected archives for integrity
- **Secure delete**
 - › Erase selected files and folders (see “File Tools [31]” chapter). Inside archives it becomes “Delete from archive” button. Please note that in both cases the files being securely deleted, or deleted from archive, cannot be recovered from the recycle bin.
- **Properties** (XP and newer Windows systems only)
 - › Show properties of selected files and folders
- On the right of the “Properties” button, an arrow shows a menu with other functions replicating some ones featured in context menu, explained in details in context menu section of this chapter:
 - › File/archive manager functions
 - (while browsing files) Copy to and Move to, create new folder and calculate file checksum, Quick delete, Zero delete, and Secure delete, zero or secure delete free space.

- › Misc functions: Add to bookmarks, Web search (search selected item's name on the web), Explore path and Open command prompt here, to open the path being currently browsed with Explorer (or other default file manager) and command prompt respectively, Properties.

Right clicking on some of the toolbar buttons shows contextual menus:

- Add: shows favourite formats menu to directly start creating an archive and select the archive format
- Convert: as add, but the favourite format menu starts archive conversion
- Extract: shows menu to extract all and (when browsing archives) displayed or selected objects, for partial extraction from archives
- Extract all to: shows quick extraction menu, the same shown by the arrow on the right of the button



Image 5b: File Manager tool bar.

The **File Manager** toolbar features three areas.

The first area contains “Open with” button, and dropdown menu showing custom applications (can be defined by the user with Organize > Applications). If nothing is selected, this dropdown becomes a launcher for the custom applications.

The second contains “Cut” / “Copy” / “Paste” buttons (“Copy to” and “Move to” are featured in the dropdown).

The third area contains various file management features, similar to ones featured in the last dropdown button of Archive manager toolbar; create new folder, find duplicates (see below “File Tools [31]” chapter) and rename featured as buttons.



Image 5c: Image Manager tool bar.

Image Manager toolbar features tree areas with quick access to functions related to manage selected graphic files (BMP, JPEG, PNG, and TIFF), operations are batch applied to all selected files of supported types, asking if modifying existing files or creating new ones.

The first area contains rotate left/right buttons and a dropdown menu with more rotation features (180°, flip vertically and mirror horizontally).

Crop button opens a dialog that allows to crop each side (top, bottom, left, right) of selected images of a given amount, expressed in percentage or in pixels.

Transform opens a dialog to resize and/or convert selected images; the dropdown menu on the right of Transform button provides quick access to most common image transformation operations: resize to a given percentage, fit to most common screen sizes, convert to other image format.

Find duplicate files and Rename buttons, and file manager dropdown completes the toolbar, providing additional useful features to manage collections of images.

Address Bar

In the address bar are featured back and forward arrows to navigate in previously visited path (or any previously applied search filter), an icon to go to upper level (**F4**).

The **navigation menu** is featured in the dropdown menu a the left of the address field in **address bar**.

1. **Navigation icons: back, next, up one level**
2. **Breadcrumb / Address: click arrows or free space for editable plain text address bar, rightclick locations for quick navigation menu**
3. **Click refresh icon for refresh (F5) entry and quick navigation menu**



Image 6: address bar; back and next icons are greyed when non available (displaying last or first path in history)

4. **Show navigation menu: filesystem, bookmarks, recent**
5. **Click the search icon for search history and to set recursive (current path and subdirs) and non recursive search (in current path only). Basic filter's field, also contains in-archive path**

Navigation menu is organized in **Bookmarks**, **Filesystem**, and **History** submenus which represent three alternative ways, system based, user based, and chronological based, to quickly access to most used archives or folders in the browser interface.

- **Bookmarks** menu reflects user-centric point of view, storing user defined favourite files, folders and search definitions. The menu also contains entries for adding bookmarks and activate Bookmarks panel allowing to add, edit, sort and remove bookmarks. Bookmarks can be added also from Misc > Add to bookmarks entry in file browser's and layout composer's context menus, and from History panel's context menu.
- **Filesystem** menu is organized following a system-centric functional and hierarchical point of view, featuring links to commonly used paths like home, desktop, documents, mounted devices and more system defined paths. If the system supports it, there are featured also searches' and libraries' folders, respectively introduced in Vista and Seven; files in those folders can be clicked to open the related virtual folder, from which drag objects into PeaZip.
- **History** menu is a chronological point of view, displaying the history of visited paths, archives, and search filters applied during the current session; below this first section are listed latest accessed archives (this feature can be disabled for privacy, see "Settings [52]" chapter).

The menu also features "Open path", "Open archive" and other functions for locating and selecting items.

Navigation menu can be reached also from application's context menu and rightclicking on Navigation bar on the left of the file browser.

The address field can be set to be viewed as **breadcrumb** (default) or simple string, with "Show address as breadcrumb" flag in Organize in Main menu.

Address breadcrumb allows to click on parent folder levels in order to quickly navigate the file system, the first path is always the root level (computer icon).

Rightclicking on the breadcrumb shows a context menu showing full list of paths in the breadcrumb.

Clicking on the breadcrumb (in the free space or on spacer arrows) transforms it in a plain address field to allow editing and cut/paste (with its own proper context menu for text field editing).

Refresh icon on the right of the breadcrumb address bar shows popup menu with history (recently visited archives and current session's paths) and refresh entry (**F5**) to force the browser update. The icon is greyed until the browser is ready. During long operations it changes in a "stop" icon to abandon current instance.

Search (F3) icon is on the right of filter's field, it can be used for basic recursive and non recursive searches; * (string) and ? (single character) wildcards are allowed. Right click on search icons shows history of previously searched strings. This basic

search filter is overridden by advanced filters (**Shift+F9**) only for archive types allowing inclusion/exclusion filters (i.e. [7z](#), [rar](#), [tar](#), [zip](#)...). Simple search switch in Organize menu allows close to natural language search.

Navigation Bar

To quickly jump to desired directory or archive *PeaZip* offers a **navigation bar** (see Image 3) on the left of the file browser, showing either navigation shortcuts (system's paths, user-defined bookmarks, recently visited archives, most common operations), a classic treeview, and an alphabetically sorted list of functions.

Clicking on the top area of the navigation bar toggle between bar modes; the bar can be hidden in Organize menu.

Status Bar

1. **Free space on current disk; Files and folders in current path or search result; Selected items**
2. **Set password (and optionally a keyfile) for browsing, extracting and creating encrypted archives**
3. **Click for quick file manager organization: set details, list or icons mode**
4. **Toggle different views for the status bar: status, details, bookmarks, history, recent archives, clipboard content**

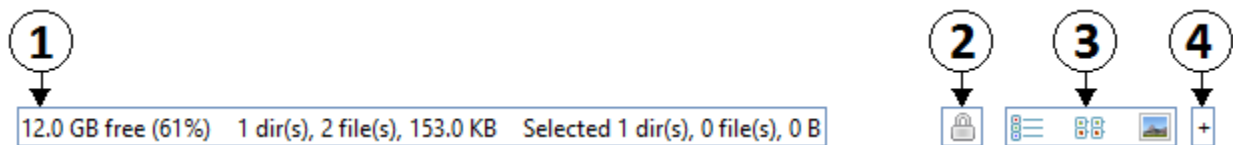


Image 7: status bar.

The padlock icon, first icon in status bar icon group, as well as “Enter password / keyfile” menu entry (**F9**) allows to set password and keyfile to be used when operating on archives (browsing, extracting/testing or creating encrypted archives); this information is kept for the current session, and can be different for each separate instance of the application.

Encrypted content, while browsing an archive, is shown with a “*” appended to filename.

If the archive is encrypted and the password is not provided, a popup will ask the user to enter the password/keyfile when extract/test/list operation are attempted.

If the password/keyfile is set, the padlock icon is changed to highlight that.

Keyfile is not mandatory, it can be used if two factor authentication is preferred to password-only authentication; keyfile creation utility can be launched from Tools menu or with Ctrl+F9.



Note

If the directory structure area is encrypted (i.e. *.7z* archives created with *-mhe* option), browsing is not possible until the correct password/keyfile is provided: the archive browser will be empty and “no matches” will be displayed in the status bar until it becomes possible to browse the archive, having the user provided the right password.

Please note the same can happen when the archive cannot be browsed for other reasons, i.e. it was corrupted due to bad download or storage media failure. When strong encryption is involved, it may not be possible to determinate if the the provided password is incorrect or if the file is corrupted, since resulting output will be random-looking in both cases.

Featured views in the status area can be toggled from the right side:

- **None**, hide views to maximize browser's area (can be set from Organize menu in main menu and context menu)

- **Status bar** (default) displaying synthetic information about the currently selected and displayed content
- **Details**, which gives more detailed information than the status bar
- **Bookmarks** shows bookmarked files, folders and archives, bookmarks can be dragged to arrange them in the desired order, clicking on the leftmost column of the Bookmarks table; otherwise the bookmarks can be arranged alphabetically by bookmark's path or by description clicking on the respective column's header (clicking again will invert the order). It is possible to open bookmarked objects with *PeaZip* with doubleclick, but from bookmarks' context menu it is also possible to explore object's path with *PeaZip* or system's file manager, and to open command prompt in item's path.
- **History** collects recently visited archives and paths
- **Clipboard** allows to check objects currently cut and/or copied, and to remove single objects from clipboard if it's need to refine the selection. Clipboard behaviour can be switched between two modes:
 - › **Standard clipboard** (default) behaves like usual file browser's clipboard, allowing a single cut or copy operation. Any further selection replaces the previous one, and on paste operation cut objects, have been moved, are removed from clipboard, while copied objects are kept in clipboard.
 - › **Advanced clipboard** allows to store multiple (and mixed) cut and copy operations; any selection is added to the previous ones (if objects are duplicate, previously selected are kept), even from different paths and disks, and executed on paste operation, which clears the clipboard content.

Drag and Drop

The file browser supports **drag and drop from system to application**, pressing **Ctrl** when dropping to the application will display a contextual menu for directly accessing the desired function, add to archive, open in *PeaZip*, copy or move here.

When files and folders are dragged to file manager, they get listed in the archive creation interface (as if they were selected and added with “Add” button), allowing to fine tune the task before confirming, or cancel the task.

If a single archive file is dragged to the browser PeaZip will show a disambiguation popup to ask if adding the object to the archive or rather opening it.

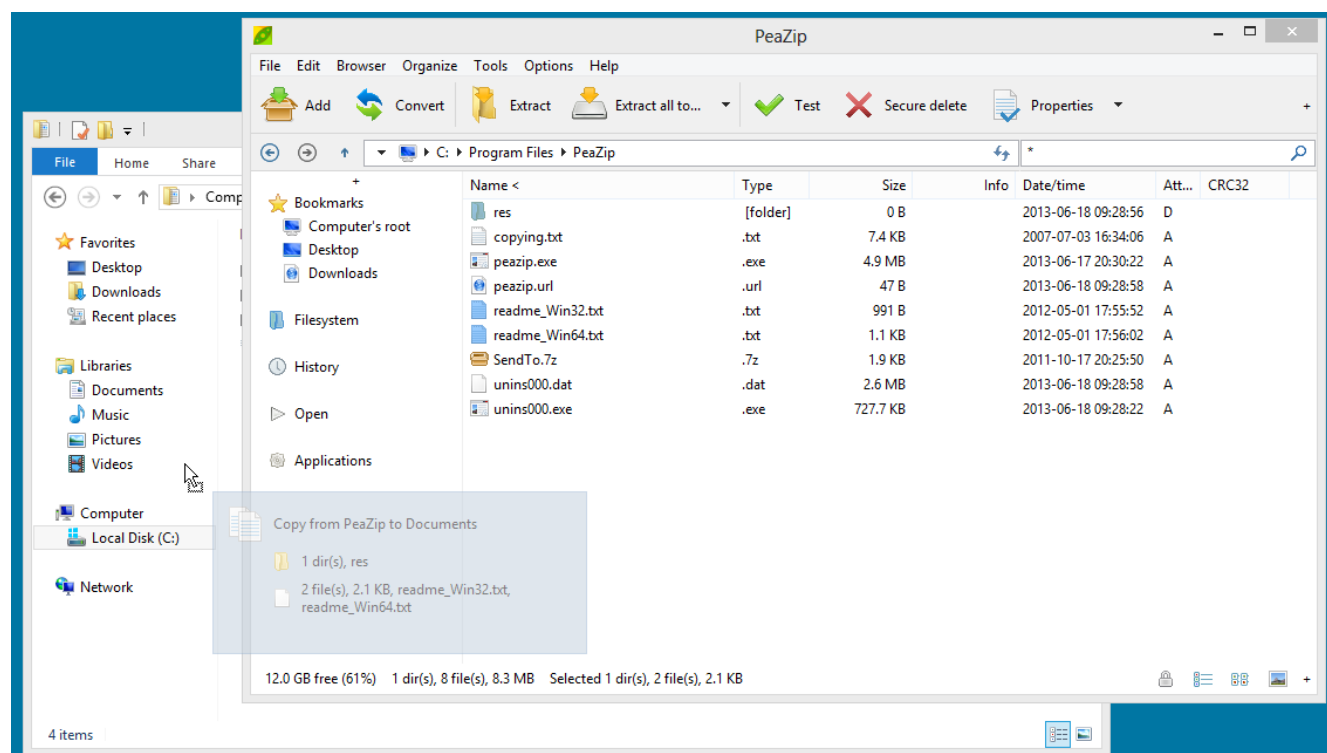


Image 8: drag and drop from application to system (Windows only); files and folders can be dragged from the filesystem or from archives to the desktop or (file)Explorer's windows with Address field enabled (as it is by default on all Windows versions). Drag and drop operations, as well cut/copy selections, are cancelled pressing Esc

In the same way, objects dragged into the browser while browsing an archive will be added to the current archive, if the file type allows modifications.

In example, it will not be possible adding objects to archive types supported only for reading, or to some solid archives. It is also not possible to add objects to some container types, like i.e. `.jar` files, MS Office and Open Office documents etc, that are derived by other standard formats (i.e. zip, tar etc) but features specific fields (i.e. digital signatures) not featured in the original standard.

In those cases, while *PeaZip* can be an useful resource to inspect and extract, it is recommended to use a specific tool for editing those files.

PeaZip checks file extension to prevent improper modifications to those file types, so if it is necessary to bypass this security recommendation it is possible by changing the file extension in one with read+write support (i.e. `.zip`) to be able to edit the file with *PeaZip*.

File Browser

In the file browser, clicking on **titles bar** column's header sorts displayed objects by the selected column i.e. name, full (file and path) name, extension, date, size etc; a second click inverts the order.

Archives and folders are highlighted (respectively, green and orange), such objects can be opened for browsing with double-click.

Archives contained into another archive will be opened in a separate instance of *PeaZip*; please note that by default this is a “preview” operation, extracting data to a temporary folder (by default in the same path, if writeable).



Tip

Hint: to open multi volume archives, the first volume (i.e. the one with `.001` extension) must be selected.



Tip

Hint: unsupported file types can be forcedly open as archives in *PeaZip* as **custom format**: this allows to use an arbitrary binary, and to customize the command's syntax, for dealing with them. Otherwise, **Open With > Open as archive** in application's context menu forces trying to open unknown file formats through the 7z/p7zip backend, so it is useful for opening a file thought to be a variant of another format as zip, tar, cab etc, rather than switching to the “Custom” interface.

The browser can switch between **flat view** mode, displaying all objects contained in the archive, and classic browser mode, using “Toggles browse/flat view” (**F6**) in main and context menus.

Flat view is used also when performing basic search or applying advanced filters; opening a folder will browse it in classic mode, exiting the flat view mode.



Tip

Hint: some applications don't explicitly declare the name of directories contained in the archive; in this way *PeaZip* cannot list those undeclared objects. If this case is detected the application automatically switches to flat mode, and in any case the archive's content is displayed in summary in application's window title.

Manually switching to flat mode (**F6**), or using search or filter feature, will allow displaying all the content of those archives.

Extraction, listing and testing of the archive is not affected by this issue.

ACE, ARC, *PAQ, PEA and QUAD/BALZ archives can be browsed by *PeaZip* in flat mode only.

In Options > Settings > Open archive it is possible to set *PeaZip* to start browsing (archives) as classic browser, as flat view or to remember last used mode. Browsing of the filesystem, rather than of archives, is not affected by this setting and will always start in classic mode since listing a path in flat mode could take very long time (i.e. if it is a root folder), and the user will be warned of that when switching to flat mode is requested while browsing the filesystem.

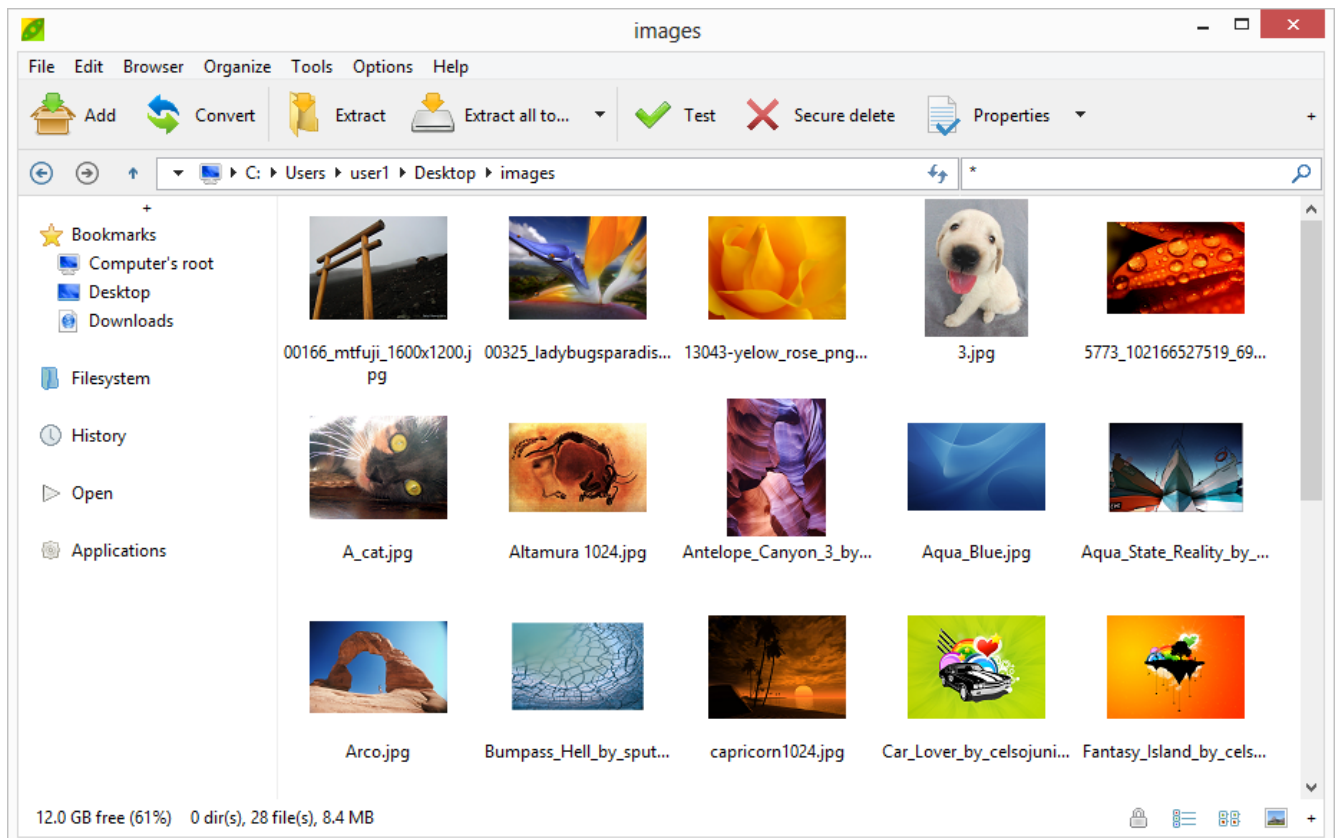
In main menu > Organize it is possible to set file browser to **show picture thumbnails** (by default off in details mode and on in icon mode), or show just generic picture's icon.

Thumbnails are generated in real time, *PeaZip* does not save thumbnails (neither as a temporary files), this is especially useful if *PeaZip* is used as portable application (or when privacy is important), as no track is let on the system and no extra space is taken. Thumbnails calculation generates a set of 4 dedicated threads, if folder or search filter is changed a new set of threads is created and old threads are stopped as soon as possible (file level and thread level granularity: each thread can be stopped separately, at the completion of each image).

Thumbnails are only available browsing the file system, not while browsing archives: no data is automatically trusted to be extracted from archives (even for temporary preview purpose) without the explicit intervention of the user.

In Organize > Browser it is possible to switch the default Details mode to Icons mode to maximize thumbnails size; it is also possible to enlarge small and large icon mode thumbnails in Organize > Size menu.

From Organize submenu in Main menu and context menu it is possible a simpler choice from a few common presets, most common presets are also available as icons on the status bar for fastest selection.



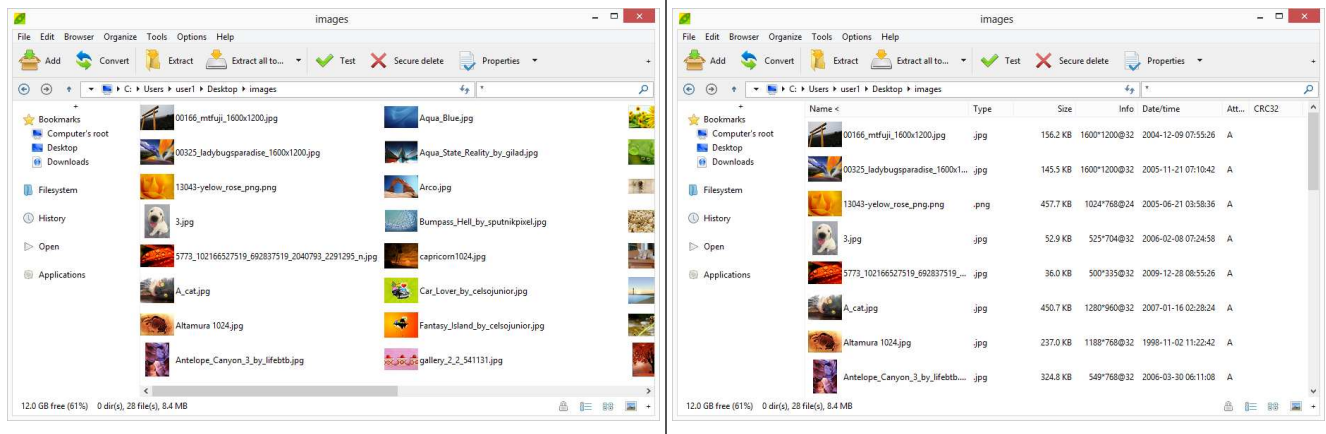


Image 9: browser in “Icons and images” preset showing medium sized image thumbnails.

On the bottom, “List and thumbnails” and “Details and thumbnails” presets; alongside presets any combination of style and size is possible to fit different user's needs.

Thumbnails are shown only browsing the filesystem (the feature can be turned on and off in Organize menus), not while browsing archives. Images are calculated in real time with multiple threads and no image cache is ever saved.

Context Menu

The browser's **context menu**, activated right clicking on the archive browser area, is organized in 4 areas, and is context sensitive as provides different options while browsing the filesystem or archives of various types (which supports different operations).

Archive management

The top area features **archive management**-related entries: **Add**, **Convert**, **Extract**, **Extract all to...**, **Test**, **Info** (verbose listing of properties of archived objects), and **List** (applies also to uncompressed files/folders).

While browsing the filesystem **Add** will send selected files and folders to the archive layout, while browsing an archive it opens a submenu allowing to add files or folders or to open a search dialog from which files/folders can be dragged into the archive itself. In this case objects will be archived starting from archive's root, compressed and encrypted accordingly to the archive's settings.



Note

Currently adding objects to archive adds them in archives root.

If it is needed to add objects to a subfolder of the archive, a workaround is to place the files in a folder (or nested folders) with that name, and then add that folder to the archive: this will place the file in archive's subfolder with same name.

I.e. to add `thisfile.txt` to `\thisfolder1\thisfolder2\` subfolder in the archive, create `thisfolder1` (where you prefer on the disk), create `thisfolder2` into `thisfolder1` and move (or copy) `thisfile.txt` into `thisfolder2`. Adding or dragging `thisfolder1` to the archive will place `thisfile.txt` in the desired subfolder `\thisfolder1\thisfolder2\` of the archive.

Please note that if it is possible for the archive format to store objects with different passwords into the same archive (i.e. in `.7z` format), you can set the different passwords each time you add objects.



Note

adding files/folders to encrypted .7z archives: .7z archive format can store objects encrypted with different passwords in the same archive, so when adding an object to an encrypted 7z archive the object will be encrypted with the password/keyfile currently set (in the form which popup clicking on the padlock icon).

If the .7z archive is encrypted with “Content and filenames” option, objects can be added only using the same password / keyfile for the whole archive.

By default, if same object exists in the archive (same name and same path in archive's directory tree), the object will be updated: if the object the user is adding is newer, it will replace the older object; if it's older, the archive will not be updated.

Please note that for some archive types, notably most solid archives (i.e. .7z created with solid archive switch enabled), or archive types supported only for browsing extraction (i.e. CAB, RAR...), doesn't allow neither add/update nor delete operations.

Convert entry allows to convert files/folders or existing archive(s), even of multiple mixed types, in the desired output format, either converting single archives or consolidating input in a single output archive (recompressing the original content)

Extract and test/info functions (in “More” submenu) are shown disabled when no archive is selected.

While browsing archives, extraction and test/info functions are transformed in submenus allowing applying the action to the whole archive, or only to displayed or selected objects.

It's recommended to use “displayed” selection to operate on all displayed objects rather than extend the selection to all objects, because it's faster for the user and because it allows to compose the command in a more elegant way, using current filter definition rather than enumerating all objects.

On the bottom of the first area is displayed “Enter password/keyfile”: clicking it will display password form in order to set password to open archives, or for creation of new encrypted archives.

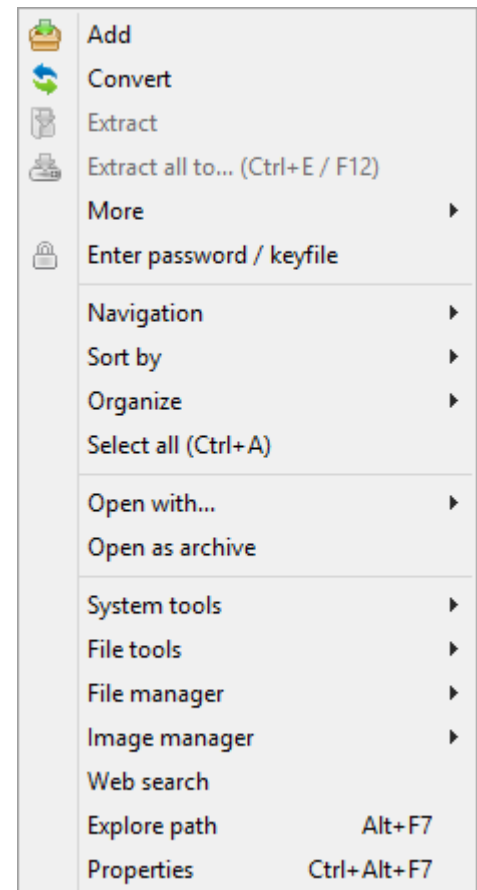


Image 10: Application's content menu

Browsing

The second area contains features related to navigate, and to manage the file browser.

“**Navigation**” submenu adds / manage Bookmarks, open archives and paths, switches flat (show all) view.

“**Organize**” submenu provides a selection of settings of main menu “Organize” features to customize most common file manager's parameters: apply preset, change mode (details, list, icons), size, and areas to be shown or hidden (menu bar, tool bar, address bar, navigation bar, status bar).

This area also contains “**Sort by**” submenu, that allows setting / inverting sorting column (column's header is not available when the browser is in List or Icons mode), and “**Select all**” (Ctrl+A)

Open with/as

In the third area “**Open as archive**” forces opening the selected file as an archive type, if it is possible to find a suitable backend to handle its structure.

In “**Open with...**” submenu it is possible to run selected files and folders (in filesystem as well inside archives) with preferred programs, scan with antivirus/antimalware etc; applications can be set in Options > Settings > Open with... which is reachable also from this menu.



Tip

Hint: in Tools > Settings in Applications tab it is possible to define a sets of up to 16 simple and 8 advanced (more flexible syntax) custom application or scripts (i.e. editors, players, antivirus/antimalware etc) to be used to open files and folders bypassing the default system's file associations; by default PeaZip tries to find some of most common applications.

Security related applications like virus scanners are conventionally placed in the second area (advanced) when automatically detected by PeaZip.

While browsing an archive, “**Open with...**” submenu is replaced by “**Extract and open with...**” and “**Preview with...**” submenus; preview functions will extract selected objects to a temporary folder rather than to the output path, and then take the programmed action on the output.



Tip

Hint: if the archive is in a read only path, preview functions will transparently switch to user's temporary folder, while extract here functions will warn the user and ask to select a writeable output path.

Double-clicking an object (while browsing the filesystem) triggers “open with associated application” action, while browsing an archive double-click triggers “preview with associated application” action.

When performing any of those actions while browsing archives, the selected object will be extracted without replicating the directory structure in the archive.

If replicating the archive structure is desired, uncheck “Always ignore paths for Extract and...” option (see “Settings [52]” chapter). If the object is a directory paths will not be ignored, this condition overrides all other switches.

File Management

The fourth area contains **file management** features.

“**System tools**” collects system's disk utilities (clean, defrag, manage, remove), system management tools (control panel, computer management, task manager) and display environment variables (both for Linux and Windows).

“**File Tools**” contains features to find duplicates, calculate checksums and hashes and more, see File Tools section in this chapter for more information.

“**File manager**” submenu allows to create new folder, rename (**F2** or **Ctrl+R**), move to Recycle Bin, quick delete, zero delete or secure delete, zero or secure delete free disk space, copy or move files (using robust file copy/move with system's **robocopy**, or **xcopy** on pre-Vista systems), open command prompt in the selected path.

Cut, copy and paste operations can also be performed with keyboard shortcuts of **Ctrl+X**, **Ctrl+C** and **Ctrl+V** respectively. Pressing **Ctrl+V** while browsing an archive adds objects from clipboard to the archive; in this case objects will not be removed from the filesystem even if **Ctrl+X** was used, since *PeaZip* tries to not automatize potentially dangerous operations such file deletion, letting that kind of decision under the full control of the user.

Quick delete performs the fast deletion of selected objects, without needing to move them to recycle bin, **zero delete** and **secure delete** (only in the filesystem, not available in archives) performs a more secure file deletion as described in “File tools” chapter.

While browsing archives filesystem related functions (including cut, copy, paste) are disabled and the area shows only simple deletion from archive, if this action is supported for the current archive type.

“**Image manager**” allows to rotate, crop or resize graphic file types (JPEG, PNG, BMP, TIFF etc).

The area also contains **Web search**, **Explore path** to open system's file manager in the selected path, to quickly switching working with *PeaZip* and standard system's file manager, and **Properties**, starting a standard system's dialog for displaying properties of selected files/folders.

File manager's keyboard shortcuts

File/archive browser supports following keyboard shortcuts; some functions are format-specific and will be ignored if not supported for the current archive type.

Table 3.1. Functional keys

F1	help
F2	rename file(s) / Ctrl+F2 copy selected to / Shift+F2 move selected to
F3	search (recursivity option is remembered) / Ctrl+F3 start as non recursive (search here) / Shift+F3 recursive / Alt+F3 system search
F4	browse root / Ctrl+F4 browse desktop / Shift+F4 browse home
F5	refresh
F6	toggle browse/flat view
F7	add to bookmarks / Ctrl+F7 open in a new instance of <i>PeaZip</i> / Shift+F7 open command prompt in selected path / Alt+F7 explore selected path
F8	browse first item in bookmarks list (Ctrl, second, Shift, third)
F9	set password/keyfile / Shift+F9 password manager / Ctrl+F9 create keyfile or random password / Ctrl+Shift+F9 set advanced filters
F10	menu / Ctrl+F10 run as different user / Alt+F10 run as administrator (Windows Vista and newer systems)
F11	toggle full screen mode / Ctrl+F11 immersive (full screen, no window border and controls)
F12	extract all to...

~ `	! 1	@ 2	# 3	\$ 4	% 5	^ 6	& 7	* 8	(9) 0	- _	+ =	← Backspace
Tab ↔	Q	W	E	R	T	Y	U	I	O	P	{ [}]	 \ _
Caps Lock ⬆	A	S	D	F	G	H	J	K	L	: ;	" '	Enter ↵	
Shift ⬆	Z	X	C	V	B	N	M	< ,	> .	? /	Shift ⬆		
Ctrl	Win Key	Alt								Alt	Win Key	Menu	Ctrl

Table 3.2. Extract without confirmation (from browser and extraction interface)

Extract all to... (open selection dialog)	Ctrl+E
Extract all here	Ctrl+Alt+E
Extract all to Desktop	Ctrl+Shift+E
Extract all to Documents	Ctrl+Alt+Shift+E

Extract to previous output path (if set)	Ctrl+0
Extract to path of 1..8' favourite (if set)	Ctrl+1..8
Extract to default path (if set)	Ctrl+9

Table 3.3. Extract

Extract all content	Ctrl+L
Extract displayed content	Ctrl+D
Extract selected content / to new folder	Ctrl+S ; use Ctrl+Enter / Shift+Enter to toggle new folder
Test all (when browsing an archive)	Ctrl+T

**Note**

“extract selected” extracts the entire selected archive(s) if browsing the filesystem, and extracts selected item(s) if browsing an archive.

Table 3.4. Extract and open / preview (on selected objects while browsing archives)

Extract and open with PeaZip	Ctrl+Shift+Z
Extract and open with default application	Ctrl+Shift+O
Extract and open with ...	Ctrl+Shift+W
Preview functions	same as previous ones, using Ctrl+Alt+Z/O/W
Preview selected	Enter or doubleclick

Table 3.5. File Tools (when browsing the filesystem)

Compare selected object with...	=
Checksum and hash of selected objects...	?

Table 3.6. Navigation

Toggle browse mode / flat view mode	* or F6
Go to computer's or archive's root	F4
Search	F3 / Ctrl+F3 non recursive / Shift+F3 recursive / Alt+F3 system search
Add to bookmarks	F7
Browse first item in bookmarks list	F8
Open directory/archive	< or Enter or doubleclick on the folder/archive
Up one level	> or click on blue back arrow icon or Alt+Up
Go to object's path	Ctrl+P (useful in flat view and search/filter mode)
Go back in history	Ctrl+B or Backspace or Alt+Left
Forward in history	Ctrl+F or Alt+Right
Select all	Ctrl+A

Table 3.7. Bars

Highlight menu bar	Alt
--------------------	------------

Swap tool bar and navigation bar	Alt+0
Hide/show menu bar	Alt+1
Toggle Tool bar	Alt+2
Hide/show address bar	Alt+3
Toggle navigation bar	Alt+4
Toggle sort column	Alt+5 (*)
Toggle browser's presets (common styles and sizes)	Alt+6
Toggle status bar view	Alt+8 (**)
Set pre-defined applications and scripts for “Open with”	Alt+9

Table 3.8. Sort Column (*)

Name	Ctrl+Alt+1
Type	Ctrl+Alt+2
Size	Ctrl+Alt+3
Packed Size	Ctrl+Alt+4
Date/Time	Ctrl+Alt+5
Attributes	Ctrl+Alt+6
CRC	Ctrl+Alt+7

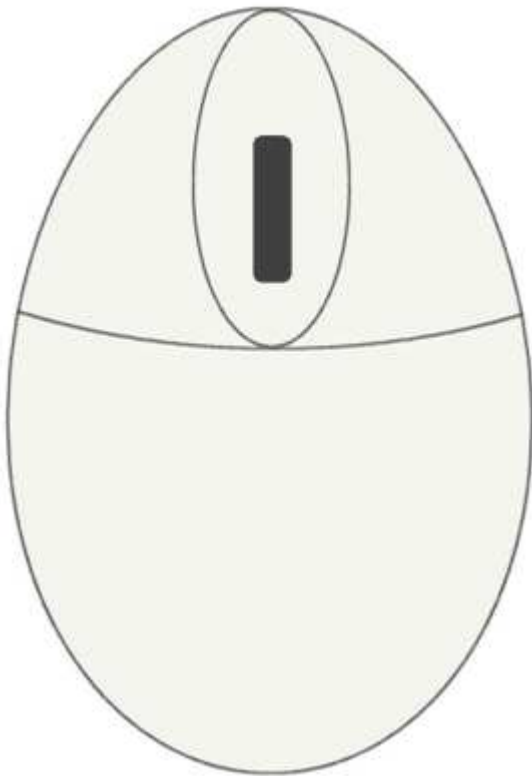
Table 3.9. Views ()**

None, hide “Views” panel	Shift+Alt+0
Status bar: basic information, navigation and password icons	Shift+Alt+1
Details, replicate and extend status bar's functions	Shift+Alt+2
Bookmarks, organize favourite files, folders and search filters	Shift+Alt+3
History, latest folders and archives	Shift+Alt+4
Clipboard, objects currently scheduled for copy or move operations	Shift+Alt+5

Table 3.10. Modify

Recycle Bin / Delete form archive	Del
Quick delete	Ctrl+Del
Zero delete	Alt+Del
Secure delete	Shift+Del
Refresh	F5 or icon in first column of titles' bar
Create new folder	Ctrl+N
Rename	Ctrl+R or F2
Cut	Ctrl+X
Copy	Ctrl+C
Paste	Ctrl+V
Cancel current selection and clear clipboard	Esc

File manager's mouse controls



[L] **Doubleclick**: preview selected object with associated application

[R] **Rightclick**: activate file/archive browser's context menu

Enter password (F9)

A screenshot of the 'Password' dialog box in PeaZip. The dialog has a title bar with a close button. It contains three input fields: 'Password', 'Confirm password', and 'Keyfile'. Below these fields are three checkboxes: 'Encrypt also file names (if supported by the format)', 'Show password field content', and 'Keep password/keyfile for current session'. At the bottom right are 'OK' and 'Cancel' buttons.

Image 11: enter password and keyfile

Password form allows to set password and, optionally, a keyfile for two factor authentication.

Once a password is entered, it is used by:

- file manager, since some encrypted archives needs password for being browsed
- archive extraction, to open encrypted archives
- archive creation, to create encrypted archive (if the selected format supports encryption); in archive creation interface it is specified if the password is set and if encryption is supported for selected archive format.

Two factor authentication is not applied to sfx archives; as self extracting modules are able to check for password only the keyfile field is ignored when compressing to self executable archives in order to not break compatibility.

“Encrypt also filenames” option is used during creation of 7Z and ARC formats: if checked, the encrypted archive will need password for being browsed, else the content will be visible; in both cases extraction will require the password.

The padlock icon in file browser's status bar (also shown in archiving and extraction interfaces) will change to visually inform that a password is set.

With “Keep password for current session” flag (default), password and keyfile are kept until changed or until *PeaZip* is closed; multiple instances of *PeaZip* can keep different passwords. Otherwise, password and keyfile are automatically reset each time a new archive is browsed.

On the bottom of password form, a bar will express colour code evaluation of password strength, red means the password is inadequate, yellow hints a weak password, green means the password strength is ok, dark green stands for strong passwords. Please note however that a good password must be in first place not easy to connect with the user through social engineering, that is a far more efficient attack than brute force or dictionary based attacks, and in second place, it is recommended to avoid dictionary attacks not using common words or quotes as password.

On the left of Password field there is a drop down menu showing passwords saved in the Password manager, and a link to access to the Password manager (also featured in main menu, Tools > Password manager).

The list of password is empty if no password is saved or if the password manager is password protected and user has not authenticated (see next chapter).

Password manager (Shift+F9)

Password manager is accessible from main menu, Tools > Password manager or from Password form, from drop down menu on the left of Password field.

The first tab allows to enter and change master password/keyfile (one or both the elements can be used) for the list of passwords. The second tab, password list, contains passwords and notes (but can be used to store any kind of information as string, i.e. a keyfile name if desired), that can be copied and pasted to any application - passwords will also be displayed in the dropdown menu in Password form.

Items in password list can be dragged (from first column) to be sorted; rightclick on the password list to options menu (add and remove items, reset, export...), doubleclick to edit an element, use **Ctrl+C** to copy a string.

If no password is set the password manager will be accessible without prompting for authentication, otherwise password list tab (and passwords in dropdown menu in Password form) will not be displayed until the user correctly authenticates, accessing to the password manager providing correct master password/keyfile.

The Password manager is protected by authenticated encryption (AES256 in EAX mode), and saved as encrypted file “**pm**” in *PeaZip*'s configuration folder, if the file is corrupted or tampered the user will be asked if trying to recover it or to delete it.

Passwords can be exported as plain text (not recommended) or in its encrypted form, in this way a password list's **.bak** file can be manually imported as password manager file, renaming it as **pm** (no extension) and copying it to *PeaZip*'s configuration path (linked in Options > Settings): this file will have the same content and password it had when it was originally saved.

This mechanism allows in example to roll back to a previous password list, or maintain various off line password lists, or exchange protected password lists with other users or other machines.

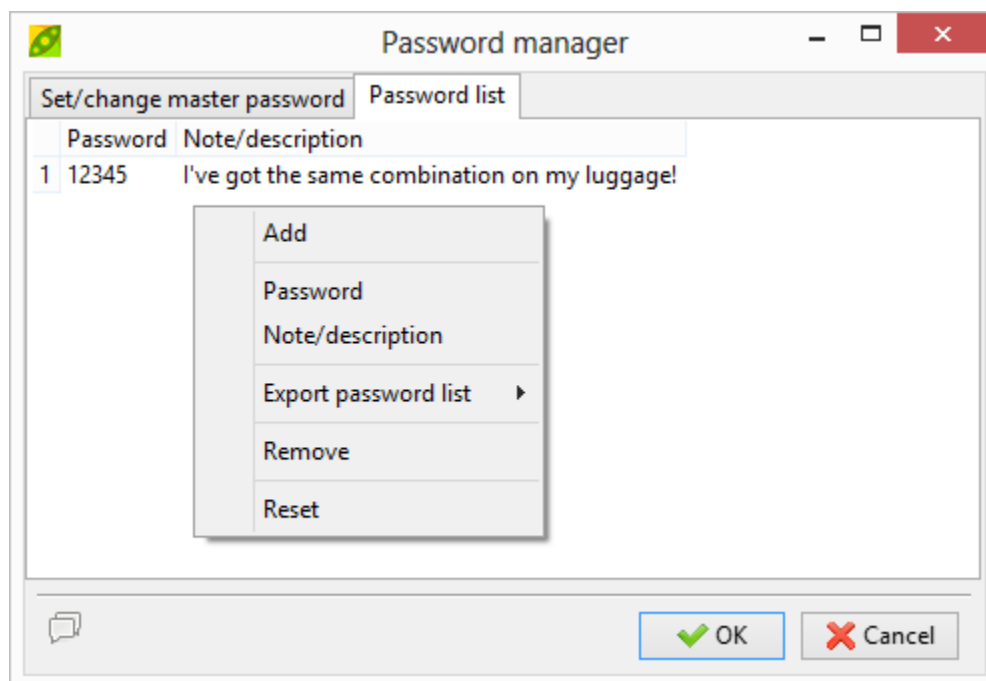


Image 12: Password manager' Password list tab, showing context menu

Create keyfile (Ctrl+F9)

For higher security against dictionary and some social engineering attacks, a **keyfile** can be used along with the passphrase to key the encryption.

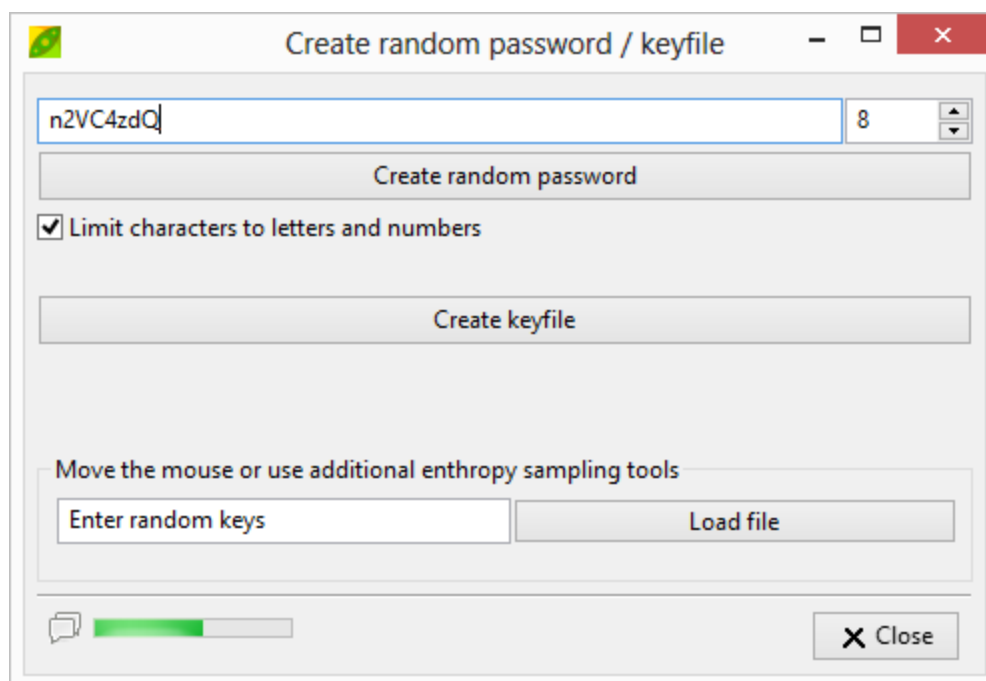


Image 13: keyfile generation utility

The keyfile need to be securely managed since its content need to remain secret as well as the passphrase; any file can be used as a key, but it's strongly recommended to use a randomly generated file.

If a keyfile is used for a non-PEA archive, the SHA256 hash of the file (no size limit) encoded in Base64 (RFC 4648) will be prepended to the password, then it will be possible to work on archives encrypted with a keyfile using *PeaZip* or any application following the same convention, or simply entering the Base64-encoded hash as the first part of the password.

PeaZip can **create a random keyfile** sampling different entropy sources and submitting entropy collected to a robust random number generation routine, in the same interface it's also possible to generate a 4-64 character **random password**; the password will contain mixed case base characters and digits only, in order to be typeable on any keyboard layout and to be accepted by almost all applications or online password forms.

The passwords and keyfiles generated in that way can be used not only in *PeaZip* but also in any other application requiring a strong password or a random keyfile.

This utility uses functions provided by *pea*'s libraries so refer to *Pea* documentation for any detail about random number generation and entropy collection in *PeaZip* project.

Set advanced filters (Ctrl+Shift+F9)

“Advanced filters” form allows to use multiple inclusion and exclusion criteria, one per line, that can optionally recurse subdirs of the archive (“Inclusion/Exclusion filters recurse subdirs” options), and can be applied only to archive formats supported through 7z and FreeArc backends.

The filters can be applied to archive's navigation, extraction and creation.

Advanced filters bypass the archive browser's basic search filter (in mentioned archive types) so address bar is disabled, while browsing archives which supports advanced filters, if “Use advanced filters” option is checked.

Multiple filters, one per line, can be written in the inclusion and exclusion fields; string delimiters (" on Windows and ' on Linux and other *x systems) are not needed to be explicitly entered by the user.

In example, if the user needs to extract (or display) only “*myfile.txt*” plus all files named “*your file*” and all *.mp3* files, but not *.mp3* starting with **a** and **m**, could write in the inclusion field:

```
myfile.txt
your file*
*.mp3
```

and in the exclusion field:

```
a*.mp3
m*.mp3
```

To exclude **directories**, use the syntax *dirname** which excludes all objects contained in the directory named “*dirname*”. To exclude **subdirectories**, the filter in previous example can be modified as *dirname*\subfoldername** to exclude all items inside “*subfoldername*” which is inside “*dirname*”.

Both absolute and relative paths can be used.

Advanced filters can be set from main menu, which shows the entry checked if advanced filters are in use, and from checkboxes in archive and extraction.

Please refer to 7z documentation about inclusion and exclusion filters to understand how they works to get best result from this very flexible tool.

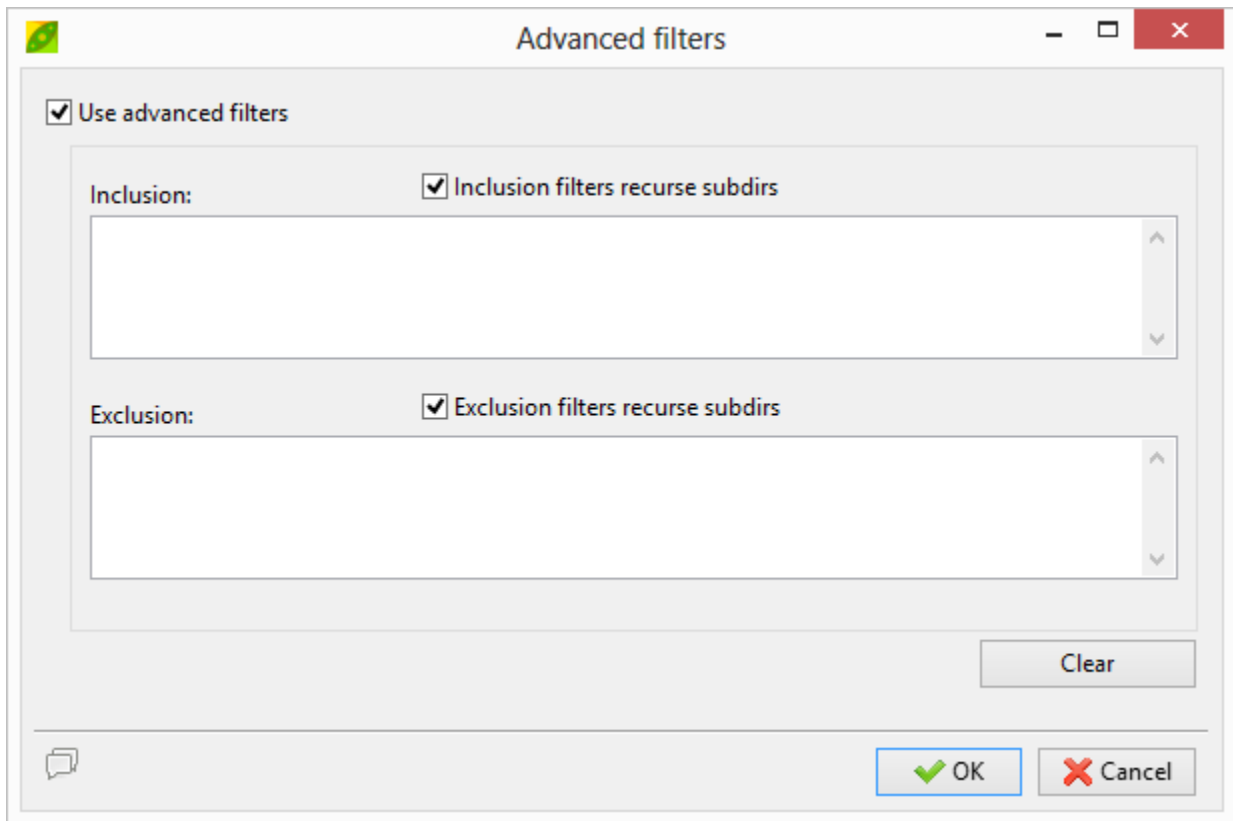


Image 14: inclusion and exclusion filters

File tools

PeaZip collect also handy file management utilities.

In More submenu:

List/information (from file browser): lists content of selected files/folders; in info mode it shows number of files and folders, older and newer object's date/time, total space occupation, and larger and smaller object's sizes.

In File manager's submenu:

Quick delete removes files and folders from the filesystem without moving them to the bin as in standard deletion operation (featured in the same group), so the operation is quicker and not recoverable unless specific data recovery software is used.

Zero delete overwrites file content with all zero and remove files and folders from the filesystem without moving to the bin.

Zero delete free space overwrites free space of a specified drive with all zero; zero deletion is marginally more secure than quick deletion with some data recovery software, anyway it is primarily meant to improve compressibility of the whole filesystem, in example when optimizing virtual machine disk images or backup disk images. Please note overwriting large volumes is time consuming, and may quickly wear flash based disks.

Secure delete is intended for securely remove files and folders from disk, avoiding possible data recovery; it provides multiple overwriting of file with random data stream (AES256 CTR) forcing flush to disk each iteration, then replacement of content with randomly sized random data to mask original file size, and multiple renaming with random string to mask original file or folder name.

Secure delete free space overwrites free space of a specified drive with random data stream (AES256 CTR) multiple times, forcing flush to disk each iteration. Please note overwriting large volumes multiple times is time consuming, and may quickly wear flash based disks. In “Settings > File Tools” it is possible to set number of passes to perform (1 VERY_FAST, 2 FAST, 4 MEDIUM, 8 SLOW, 16 VERY_SLOW) over the data for Secure delete and Secure delete free space.



Note

Notes about secure file deletion: please use this function carefully since securely deleted data usually will not be recoverable.

Please note that secure file deletion doesn't overcome any known risk of data leakage, i.e. it may exist copies of the data as temporary files saved by other applications, or as not securely deleted older versions of the file, or cached by the system: wiping a file cannot affect that orphaned data, which may be recovered with software utilities or specific hardware probes.

Moreover, flash based storage usually re-allocates sectors for writing transparently for the software, in order to reduce unit's wear since flash units have a shorter lifespan in terms of writes; this doesn't allow to efficiently physically overwrite original content, reducing the efficiency of file wiping; in those cases wiping the whole disk would be more effective, but (for flash based disks) it will lead to fast wear and reduced lifespan of devices.



Note

Notes about secure free space deletion: please note that efficiency of software based free space deletion can be limited by underlying factors, i.e. disk areas locked or made not available from the operating system, or disk drivers, or even at lower level (BIOS/UEFI or disk logic).



Note

Note about zero deletion and zero free space deletion: with standard deletion, data is removed from the filesystem's table of content, but remains on disk (that's why overwriting data is necessary for secure deletion).

When compressing a filesystem, i.e. a backup disk image, or optimizing a virtual machine disk, all actual data in the filesystem must be handled so having files deleted with standard deletion does not reduce the amount of data the disk image contains.

Using secure deletion may worsen the problem, as the random data written to disk to overwrite original data is not compressible.

Zero deletion mode offers a solution in this scenario, as the data is overwritten with a regular pattern that can be compressed to extremely high ratios, effectively reducing this overhead.

In File tools submenu:

Find duplicates is a fast routine to find duplicate files displaying the report directly in the file browser. This utility can be combined with all file browser's features, like **F6** to display subfolder's content, or **F3** to apply a search filter (recursive by default), for all displayed or only selected items. Only true duplicates are reported, with same size and same binary content.

Control algorithm can be selected (Organize > Browser > Checksum/hash) from a wide array of 15 algorithms: Adler32, CRC16/24/32/64, eDonkey, MD4, MD5, Ripemd160, SHA1, SHA224/256/386/512, Whirlpool512.

Ripemd, SHA and Whirlpool algorithms are cryptographically strong, and suited to detect malicious modifications that might have been introduced to pass undetected by simpler control algorithms.

CRC32 / CRC32 (selected) calculate the checksum or hash for all / selected items, using the same control algorithms set for the duplicate finder. This is useful to check files for corruption or substitution when an original checksum or hash value is known.

In File tools submenu, and also available in archiving extraction interface:

Check files can perform in a single pass multiple user selected hash and checksum on multiple files at once. In Tools > Settings > File Tools it is possible to select algorithms to be performed over the input files.

Compare files performs byte to byte comparison between two files; unlike checksum or hash based comparison byte to byte comparison can spot exactly what are the different bytes and it is not susceptible of collisions under any circumstance, even if this condition is highly improbable and very difficult or not practically possible to trigger if a proper hash function is chosen.

Hexadecimal preview (beta): a very basic tool to view the content of a file represented as hexadecimal values.

Shows offset, hexadecimal representation of bytes, and possible utf8 translation of each string of 16 bytes per row.

At current level of implementation please note that:

1. not all rows could be correctly represented in the GUI as utf8 strings, but they will be correctly written to file using save report feature;
2. the implementation is limited to small files (< 16MB).

Chapter 4. Extract archives

This interface is activated when one or more archives are selected for extraction from file manager, or when browsing an archive the whole content or part of it is selected for extraction; the main application's menu is enabled (except for Browser submenu) and three tabs are featured.

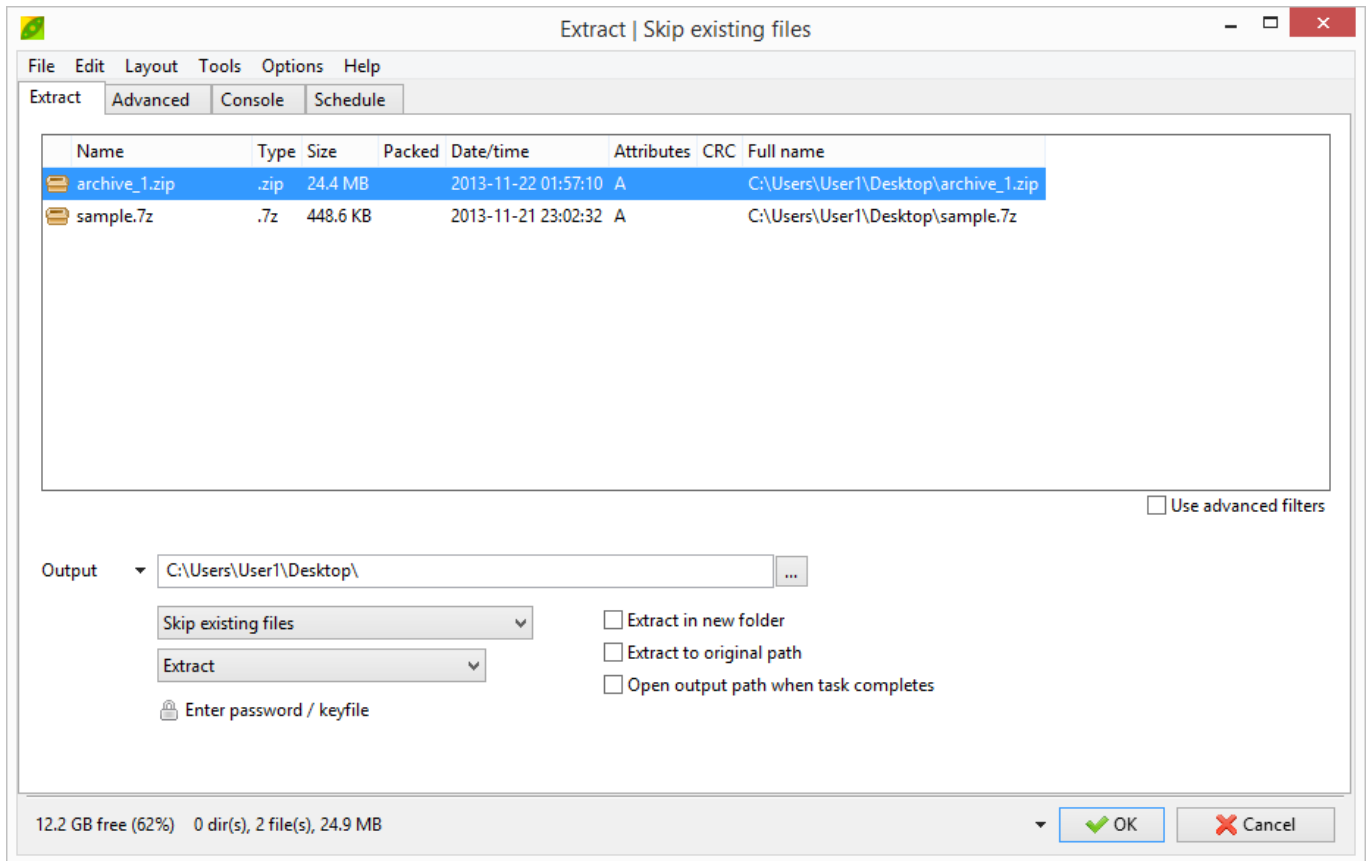


Image 15: Extraction interface, rightclick to display the context menu to add/remove objects from extraction layout, and display other related functions. Click on the dropdown menu's arrow on the left of Output path for quick selection in system's paths, favourites, and recently opened directories. Click on the arrow on the left of the OK button for directly “Extract here” or “Extract to new folder”.

It is possible to skip this confirmation interface extracting archives directly from the system using “Extract here” or “Extract here (in new folder)” context menu entries.

It is also possible to skip confirmation interface and to extract directly from *PeaZip*'s file/archive browser, in example:

- open the archive and drag desired files and folders to the desired output location on your system, or drag with right mouse button (or pressing Ctrl) for a contextual menu to chose if to extract all or only selected items, and to extract into a new folder or not
- open the archive, rightclick on an item and select “Extract and open with...” to perform both the two operations on the item with a single click
- Click “Extract all to...” button (shortcut: **Ctrl+E** or **F12**), or select a quick extraction destination from the dropdown menu on its right; other shortcuts:
 - › **Ctrl+Alt+E** extracts archive in its current folder
 - › **Ctrl+Shift+E** extracts to desktop
 - › **Ctrl+Alt+Shift+E** extracts to user's documents
 - › **Ctrl+0** extracts to the previous output path
 - › **Ctrl+1..8** extracts to 1..8 favourite's path (if defined)

- › **Ctrl+9** extracts to default output path (if defined)

The aforementioned keyboard shortcuts are available both from the file manager and the archive extraction interface, to directly start extraction bypassing the confirmation dialog.

Extract

This is the main tab for extraction tasks, containing most commonly used parameters and **Ok** and **Cancel** button to confirm start or to discard the current operation.

Clicking **Ok** saves modifications to extraction options, while **Cancel** discards the modifications; it is also possible to confirm changes with an empty layout in order to modify *PeaZip*'s behaviour without the need to start a task.

Options will not be saved if forcedly modified entering a special operation mode, i.e. when using system's context menu entries “Extract here” or “Extract here (in new folder)”.

In the top area of the tab is shown the **Input** area, where are listed the archives that are going to be extracted (**extraction layout**), with the total number of archives and total size; additional archives can be dragged here to be added to the list.

Objects in the archive layout can be sorted by name, full name, size, extension, type, attributes etc, clicking on titles in archive layout's title bar.

If extracting from inside an archive, the layout will display items listed to be extracted from the archive, and will not accept modifications from drag and drop or context menu, and it will be available “**Extract all**” link below the input list to turn a partial extraction in extraction of the entire archive if desired.

“**Use advanced filters**” checkbox shows if advanced filters are set or not; clicking the unchecked box will show the advanced filter's form to set inclusion/exclusion filters, clicking the checked box will deactivate advanced filters.

Rightclicking on the input list shows the **contextual menu**, which features functions to add archives to extraction layout (add files, search and drag here, load layout), and other related functions.

The layout can be saved to a UTF-8 text file (for maximum flexibility of use); when a layout is loaded each object is checked (must exist, duplicates are skipped).

From the context menu it is also possible to remove objects from the archive's layout (“Remove selected objects” and “Clear layout”) and to explore selected object's path.

“Go to file browser” can be used to return to file browsing without discarding the current list of archives, in example to navigate and search for other archives to be added to the list from file browser interface.

“Open with...” submenu of context menu allows opening the selected object with *PeaZip*, associated application, or a custom applications.

“File Tools” submenu allows quick access to some of *PeaZip* functions to be applied on selected objects (see “File Tools [31]” chapter).

In the bottom area of the tab is featured **Output** group, that allows to select output directory; on the left of the address box, the arrow button popup a navigation menu similar to the one featured in file manager, to speed up the selection of most used paths.

The extraction's navigation menu is organized in **Bookmarks**, **Filesystem** and **Recent** submenus, containing only directory entries where the file manager's navigation menu can feature also file entries.

In the navigation menu is also featured “Use default output path” entry to select an output path to be used by default in place of archive's path, useful if the user often extracts to the same path.

When this feature is active, the “Use default output path” entry is flagged, and can be clicked again to remove the flag and deactivate the option.

Extract to original path option can be used when multiple archives from different paths are listed for extraction, in order to perform extraction of each archive in its original input path.

In the same area it is also possible to set the **password**, if needed for extraction, and to check if password is set or not.

This area also feature output options for 7z backend, that is used to support most common file formats (“Advanced” tab contains parameters for other backend executables).

- Possible actions performed by the extraction routine:
 - › “Extract” extracts archived objects with paths, replicating the directory structure of the input data;
 - › “Extract (without path)” will extract all archived files to the same path;
 - › “List” will show archive's content;
 - › “List (with details)” will give a more detailed report on archive's content, the same given by “Info” entries in context menu. List functions will always be performed in pipe mode (even if 7z option is set to “console mode”), using graphical wrapper in order to make easier reading and saving the report.
 - › “Test” will perform type specific tests to prove or disprove archive's integrity.
- What the extraction routine will do in case of naming conflict while extracting data. Anyway, using “Extract in new folder” switch will assure avoiding naming conflict.
 - › “Skip existing files” assure that pre-existing objects are not touched by the extraction operation, being the conflicting objects not extracted from the archive (default).
 - › “Auto rename extracted files” assign a new unique name to objects being extracted from the archive each time a naming conflict is encountered; that policy assures that pre-existing objects will keep their names and new ones will get new unique names.
 - › “Auto rename existing files” assures that extracted objects get the desired name while pre-existing objects are renamed with a new unique name.
 - › “Overwrite existing files” make all pre-existing objects overwritten by extracted objects.
 - › “Ask before overwriting (in console)”: no defined policy, the console will be shown alongside graphic process launcher allowing the user to decide interactively if overwriting or skipping files.

Extract in new folder checkbox, when checked, triggers extraction to a fresh new folder, avoiding possible naming conflict and unwanted “tarbomb” effect (when an unexpectedly large number of files is extracted in current path getting mixed with existing files).

Open output path when task completes automatically open the output directory where the archive was extracted to.

The status bar contains, on the left, information of free space on current output disk, and input size, and on the right OK and Cancel buttons.

Cancelling an operation also means discarding changes in option switches, while confirming with OK saves changes.



Tip

Hint: for just changing extraction options, it is possible to work with no input (empty layout), modify options and save with OK button

Advanced

This tab allows to set parameters for non-7z backend executables. Notably, in this group it is possible to change action for FreeArc backend to “Repair”, which (for ARC archives only) verifies integrity and tries to repair the archive(s) using the recovery records that may have been included at the archive creation.

Extract supported non-archive types checkbox, unchecked by default, allows some non-archive types like executables, MS Office and Open Office documents etc to be treated as archives, in order to be disassembled.

In file manager those file types are displayed with special icons to show they can be accessed as archives by *PeaZip*, but will not be treated as archives by default.

Extract unsupported file types checkbox, unchecked by default, allows any arbitrary type of file to be treated as an archive by *PeaZip*, providing the user can specify a custom executable backend to handle the file type in “**Custom parameters**” group, which is enabled if this option is checked.

Console, Schedule

Console tab allow to export the task defined in the GUI as a script, that can be interactively edited, tested and saved.

Schedule tab allows a simplified one pass UI to save the task definition and schedule it in Windows' system task scheduler (Vista and newer systems).

For more information, see “Save and schedule tasks [48]” chapter.

Note about extraction

The default operation is extracting recreating the full parent path's directory tree, as saved in the archive, in the extraction destination path.

This may be necessary to preserve the functionalities of reciprocal links of archived objects, i.e. link files, hypertexts, scripts, programs, databases etc...

In extraction confirmation interface it is possible to override this behaviour selecting “Extract (without paths)” in extraction option: this option will flatten the extracted content to a single directory, all information about the original directory tree (both up and below the directory of the selected items) will not be preserved.

In Options > Settigs, Open archive tab, are featured “Always ignore paths...” directives, in order to extract items from the archive in a flat mode without recreating the directory tree, as with “Extract (without paths)”.

These directives can be fine tuned for each special extraction mode: for drag and drop operations, for extract and open with, and for extract selected or displayed objects (all objects shown with current browsing or search filter).

Unlike “Extract (without paths)”, “Always ignore paths...” directives are overridden if one of the selected objects is a directory, this because flat extraction will lose information about directory tree so it is considered unfit for directories, and will be applied only if files are selected. The same rule applies when extracting objects from archives browsed in flat mode, consistently with behaviour of mainstream archive utilities.

To apply flat extraction to a directory, rightclick, Extract > Extract selected objects, set “Extract (without paths)”.

By default these directives are set on for “drag and drop” and “extract and open with” operations, so by default all partial extraction operations starting from file/archive browser interface behaves in the same way, trying to ignore re-creating paths, while by default all special operations starting from the extraction confirmation dialog (extract selected and displayed) will not.

Chapter 5. Create / convert archives

This interface is activated when files and folders are selected for being added to an archive from file manager, or when, browsing an archive, it is requested to update it adding other files and folders.

The same interface is activated using for archive conversion, which activates by default “Convert existing archives” and “Add each object to a separate archive” options.

Rightclicking on “[Add]” or “[Convert]” button in toolbar is possible to start creating/converting archives in a specific format chosen from the “Favourite formats” context menu.

The main application's menu is enabled (except for Browser submenu) and three tabs are featured.

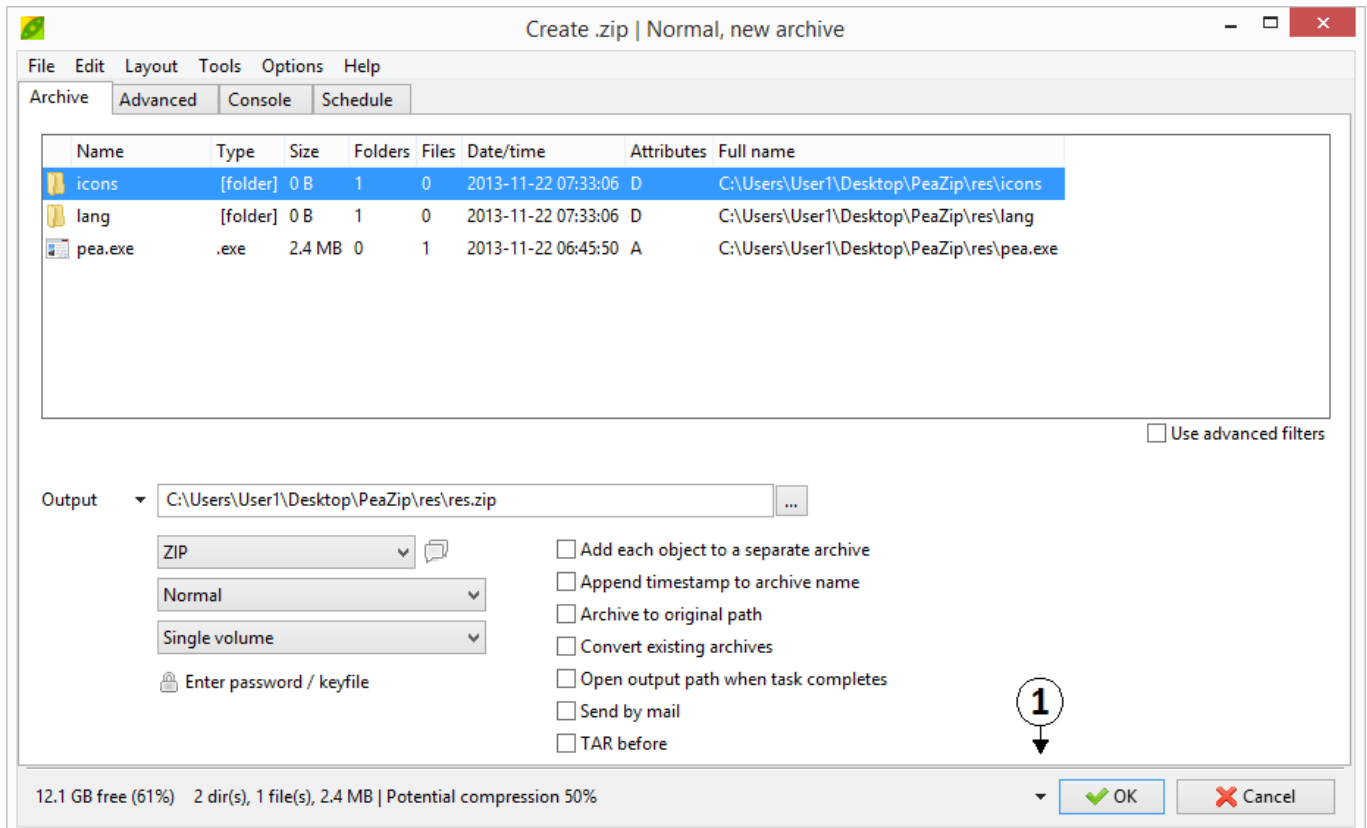


Image 16: “Create archive” interface.

Rightclick to display the context menu to add files and folders to archiving layout (add files, add folder, search and drag here, load layout), and display other related functions – including enumerate directories' content on demand for better estimate of input size and possible compression.

Click on the arrow on the left of the output address for quick selection of the output path in system' paths, favourites, and recently opened directories.

Click on the arrow on the left of OK button (1) to directly compress/convert to the selected format.

1. Favourite formats context menu

Archive

This is the main tab for archive creation (or update) tasks, containing most commonly used parameters and **Ok** and **Cancel** button to confirm start or to discard the current operation.

Clicking Ok also saves modifications to archive creation options, while Cancel discards the modifications; it is also possible to confirm changes with an empty layout in order to modify *PeaZip*'s behaviour without the need to start a task.

Options will not be saved if forcedly modified entering a special operation mode, i.e. adding files to an existing archives. Please note that some options (like TAR before or conversion switches, or some advanced format options) are context dependent and will be reset in next task instances.

In the top area of the tab is featured the **Input** group, where are listed the items that are going to be archived (**archiving layout**), with the total number of files and folders and total size; additional files and folders can be dragged here to be added to the list.

Rightclicking on the input list shows the **context menu**, which features functions to add files and folders to archiving layout (add files, add folder, search and drag here, load layout), and other related functions.

The layout can be saved to a UTF-8 text file (for maximum flexibility of use); when a layout is loaded each object is checked (must exist, duplicates are skipped).

From the context menu it is also possible to remove objects from the archive's layout ("Remove selected objects" and "Clear layout") and to explore selected object's path.

"Go to file browser" can be used to return to file browsing without discarding the current list of archives, in example to navigate and search for other files and folders to be added to the list from file browser interface.

"Enumerate directories' content" shows the size and the number of files and folders actually contained in directories sent to compression, for a better estimate of input size and possible output size (see "Potential compression" information in status bar).

"Open with..." submenu of context menu allows opening the selected object with *PeaZip*, associated application, or a custom applications.

"File Tools" submenu allows quick access to some *PeaZip* functions to be applied on selected objects (see "File Tools [31]" chapter). Objects in the archive layout can be sorted by name, full name, size, extension, type, attributes etc, clicking on titles in archive layout's title bar.

"Use advanced filters" checkbox shows if advanced filters are set or not; clicking the unchecked box will show the advanced filter's form to set inclusion/exclusion filters, clicking the checked bow will deactivate advanced filters.

In the bottom area of the tab is featured **Output** group, that allows to select output directory and file name; on the left of the address box, the arrow button popup a navigation menu similar to the one featured in file manager, to speed up the selection of most used paths.

The archiving navigation menu is organized in **Filesystem**, **Bookmarks** and **Recent** submenus, containing only directory entries where the file manager's navigation menu can feature also file entries.

Archive to original path option can be be used when multiple files/folders from different paths are listed for archiving or conversion, in order to create each archive in the same path of each input item; flagging this option will consequently activate "Add each object to a separate archive" option (see below).

Output options set the archive **format** and **compression level**, more options for each format can be fine-tuned in "Advanced" tab; last used compression options will be remembered to be used as default, avoiding the need to set it in advanced tab following times the format is used; resetting applications default resets also compression options.

The info icon in the right of the archive type selection combobox will display a brief explanation of the characteristics and features offered by the selected format.

The arrow on the left of OK button shows **favourite formats** menu, which for brevity and simplicity displays only some of the supported archive format, the most widespread. Favourite formats can be customized in Options > Settigs > Create archive. In the same group it is possible to set **Volume size**, allow (optionally) splitting the resulting archive in volumes of given size, choosing between presets (from 1.44 MB FD to 8.5 GB DVD DL size) or freely composing a custom size.

This option is not supported by some formats (i.e. self extracting archives) and will be automatically overridden if not supported (the combo box will be greyed to be noticed by the user).



Tip

Hint: to store large files/archives on **small supports**, or to respect **mail attachments size limitations**, it is recommended to split the output in volumes of desired size instead of spending more time for a deeper compression which is not always capable to reduce the output under the desired size.

From this area it is also possible to set the **password** to create an encrypted archive, the button is only displayed if the selected archive format supports encryption.

From password popup it is possible to check/uncheck “Encrypt filenames” option, which, if supported by the selected archive format (7Z and ARC formats) does not allow to browse the content of the archive if the right password is not provided.

Add each object to a separate archive send each item in the list to a separate archive.

In example, adding x folders to the archive list with this option checked will create x separate archives; if it is desired to add each file contained in a folder to a separate archive, instead, select the files in file manager and click “Add” to add them individually to the list.

Append timestamp to archive name will append current date and time to the name of the archive, it is useful for archiving and backup purpose.

Convert existing archives extracts listed archives (not modifies non-archive files and folders) in order to recompress the original data from its uncompressed form, which can improve compression ratio.

Used with “Add each object to a separate archive” option (default, if “Convert” function was requested), it performs a mass conversion of each listed archive into the desired format, keeping them separated.

After the extraction stage it asks for confirmation to proceed with compression, this allows to abort the process in case of problems (disk full, unknown password, corrupted archives etc) or to further modify the extracted data before the compression.

After the compression stage, it asks for confirmation before deleting temporary files and folders created for conversion, however original archives are not deleted and not modified in any stage of the conversion to let the user in control about keeping or removing them.

Open output path when task completes option (**Shift+Ctrl+O**) automatically opens the output directory where the archive was created in at the end of the process.

TAR before option allows to consolidate all input objects in a single TAR archive, temporarily saved in the output path, which will then (in a second pass) be compress/encrypt/split using the format specified in archive type combo box (after that second pass the temporary TAR archive will be deleted).

That option allows easily merging the advantages of TAR format (of mainstream and standard usage on most Unix systems) with features of other archive formats. It is especially useful as it allows to select compression-only formats (like gz, bz, quad) to compress archives of multiple objects (resulting i.e. in `tar.gz` or `tar.bz` or `tar.quad`) quite transparently for the user, but however it can be used in conjunction with any format (forming i.e `tar.7z`, `tar.paq`, `tar.pea` and so on).

The application will try to check if “TAR before” option is needed; however the user can check/uncheck this option anytime before launching the archiving process.

The status bar contains, on the left, information of free space on current output disk, input size, and estimated output size. On the right are features OK and Cancel buttons: cancelling an operation also means discarding changes in option switches, while confirming with OK saves changes.



Tip

Hint: for just changing compression / conversion options, it is possible to work with no input (empty layout), modify options and save with OK button

Advanced

This tab contains fine-grained options for each supported format, including compression level.

Once advanced options for a given format are set, they are remembered, so it is usually not needed to use Advanced tab and all of archive creation can be done from Archive tab.



Tip

Hint: most of **multimedia file formats** (like [jpg](#), [png](#), [mpg](#), [avi](#), [mp3](#)...) are already compressed with algorithms that are either lossy and/or strongly optimized for the specific data structure, so compressing them with general purpose lossless compression algorithms, even most powerful ones, are likely to provide only marginal benefits in terms of size, compared with huge benefits which can be obtained compressing other types of files ([bmp](#), [tiff](#), [doc](#), [xls](#), [txt](#), [html](#)...).

Consequently, it is recommended to use fastest compression settings, or fast algorithms (i.e. gz and zip's deflate), or even “Store” option to don't compress, to archive those types of files in a computationally efficient way; in this way it is possible to consolidate and optionally encrypt files that are sent to the archive, without spending much time for compression.

Backend executables can be used by *PeaZip* in the native console mode or, by default, through a graphic wrapper (see “PeaLauncher [50]” chapter), displaying additional information usually not given by the console application (exit code explanation, input size, elapsed time in ms, speed in B/ms) and allowing to save a task report (console output plus additional information); this behaviour can be customized in Options > Settigs.

7z - *Performances scales very well on multicore machines; following formats are recommended:*

7Z when high compression is desired; offers powerful encryption

ZIP to provide archives which all Windows user can read with integrated “compressed folders” utility, or with most of mainstream file/archive managers

TAR to provide archives which most Unix (Linux, BSD ...) users can read with applications usually bundled by default

WIM to create disk images for Windows environment

GZ, BZip2, XZ to compress single files or uncompressed containers, like TAR; GZ is the fastest, BZIP is slower but compresses better, XZ utterly improves compression but requires more memory and computing power.

Selecting a format supported through 7z executable (7Z, Bzip2, GZ, self-extracting 7Z, TAR, WIM, XZ, ZIP) it will be displayed the 7z option subpanel, featuring Options, Compression and Encryption group box.

“Compression” group box allows choosing compression level and algorithm and to fine tune compression options, which are format specific.



Note

Last used compression level and method is remembered by *PeaZip* for 7z backend, but other custom options (dictionary, word, passes, solid block size) will be remembered only for the current session (until the archive type is changed or edited) and next times the last used compression level will be proposed with its default settings.

Option “Compress files open for writing” allows to add files to the archive even if open for writing by other applications, very useful when running backup jobs (otherwise, if the option is not checked, open for writing files will be skipped); the last used setting is remembered.

“Create self-extracting archive” options create a Win32 executable (.exe) that will self extract archive content (archived and compressed in 7z format); the receiver will then not need any application to extract the archive since all what is needed for extraction is embedded in the archive itself. As drawback the resulting file will be about 80KB bigger than the raw archive and the executable must be in a single volume (Volume size option will be greyed). Checking this option the user can choose between a console and a graphical interface (default) for the self-extracting application.

“Encryption” group box contains encryption related options:

- “Algorithm” allows to chose encryption algorithm; 7Z format supports AES, while ZIP supports AES and ZipCrypto algorithm. AES is always used with 256 bit keys. ZipCrypto is a weak algorithm but may be useful if the user need to generate encrypted .zip archives compatible with some outdated applications not supporting new WinZip standard AES-based AE encryption.

“Options” group box allows choosing other format specific options:

- “Function” combo box allow to choose the policy to follow when a pre-existing archive with the given name is found on the system:
 - › new archive will force the creation of a new archive, with unique name;
 - › add will append the input objects to the archive content, if an archive with the given name exists;
 - › update will substitute matching objects into the archive, if existing, with input objects.
- “Threads” combo box allow specifying the number of threads to try to generate for parallelising and speeding up the execution of the application (possible only for LZMA, Deflate, Deflate64 and BZip2 algorithms) on Hyper threading-enabled / multi-core / multi-CPU environments; on Windows systems single processor systems will be recognized and will use “no multithreading” option by default while multi processor system will use “generic multithreading” option by default; on non Windows systems “no multithreading” is the default option.
- “Other” edit box allows to freely enter additional parameters for the archiving task. This string is inserted by default after all the parameters set by the GUI and its syntax is not checked, so use with caution.
- Send by mail open a new mail in the default mail client, attaching the resulting archive; it requires a compatible mail client as default system client, i.e. *Outlook* or *Outlook Express* in *Windows*, and doesn't work with multi volume archives (the options is hidden if Volume size is not “Single volume”).

ARC - *Recommended when high compression is desired; offers powerful encryption and, optionally, recovery records. Performances scales very well on multicore machines.*

In FreeARC's options subpanel, it is possible to adjust compression level, specify file grouping strategy for solid archives, create recovery records to attempt archive's repair in case of corruption, encrypt the archive with various encryption algorithms (AES, Serpent, Twofish, and Blowfish), archive with absolute or relative paths (default), create self extracting archives selecting from many sfx modules.

The format is currently being actively developed.

Custom - *Allows to select an external compressor/decompressor to support file types which are unknown to PeaZip*

Selecting “Custom” format, it will be displayed a subpanel allowing to specify archiver/compression utility to use to perform the task, alongside parameters (free editing) and syntax (the way parameters, input list and output name should be organized on the resulting command line).

Last 8 used custom executables are remembered and can be chosen from a popup menu rightclicking on executable's selection control.

Please note that exact syntax of the command for a custom executable may need to be utterly adjusted, this can be done in “Console” tab, which allows importing and free editing of the task definition.

Pea - *Recommended when powerful encryption and integrity check are desired; provides fast compression*

Selecting *Pea* as archive format it will be displayed the *Pea* option panel; this is the archive format developed from the author of *PeaZip* and it is supported through *Pea* executable; for more information on it you may look the documentation about *Pea* on <http://www.peazip.org/peazip-help.html>

QUAD/BALZ - *Recommended when it is desired to provide average to good compression, with fast uncompressing*

Selecting QUAD/BALZ, the option subpanel will allow to choose compressor engine between QUAD and BALZ (newer ROLZ-based compressor), and if using max compression mode (for both QUAD and BALZ, compression will be slower, but decompression will remain fast). QUAD and BALZ are compression only algorithms and likewise other ones (GZ, BZ2, LPAQ) they can benefit of “TAR before” switch for handling multiple input files.

Split - *Recommended to split a single large file to the desired size, without attempting compression*

Options for file split are limited to optional integrity check algorithm to be performed on the file; integrity check information will be saved on a separate file, allowing files splitted by *PeaZip* to be joined by other similar applications (like Unix split, Hjsplit, FileTools etc).

UPX - *Recommended to developers to reduce the size of executables*

UPX compression is intended mainly for developers needing to reduce the size of executables before distribution.

It can accept only a single executable file at time and is not intended to be used as a general purpose compression utility; in fact misapplying Strip and/or UPX on non suitable executables (i.e. already stripped executables) may easily lead to unusable output executables.

It is possible to omit either UPX compression (selecting “do not compress” in “Compression” combo box) or Strip pre-processing (unchecking “Strip before UPX”).

By default it is created a backup copy of the executable before Strip/UPX (option “Keep executable's backup”), named as the executable with `.backup` extension appended.

***PAQ** - *Recommended when highest possible compression is desired (experimental; speed and memory usage makes it not recommendable for general purpose use on current generation machines)*

PAQ is a very powerful compression scheme and it's presently in research state; different versions and branches exist and you should use the very same implementation to compress and uncompress data, *PeaZip* uses PAQ8O for compression.

It brings unmatched compression ratio, better than any other compressor; the downside is that the algorithm has very high memory and computing power requirements for today's machines, resulting to be very slow if compared to mainstream compression algorithms, so the user should carefully consider if the speed/compression trade-off would be advantageous case by case.

To obtain best results while compressing many small files you should also consider consolidation them before (i.e. using tar) since PAQ would store filenames (and sizes) in uncompressed form.

ZPAQ is faster and lighter than PAQ, at the cost of a slightly inferior compression ratio.

Please note that for ZPAQ currently *PeaZip* supports only storing/extracting to full pathnames, so output options will be ignored for that format.

Console

Console tab allow to export the task defined in the GUI as a script, that can be interactively edited, tested and saved.

Schedule tab allows a simplified one pass UI to save the task definition and schedule it in Windows' system task scheduler (Vista and newer systems).

For more information, see “Save and schedule tasks [48]” chapter.

Keyboard shortcuts for archive extraction and creation

~	!	@	#	\$	%	^	&	*	()	-	+	←
1	2	3	4	5	6	7	8	9	0	_	=		Backspace
Tab	←	Q	W	E	R	T	Y	U	I	O	P	{	}
	→											[]
Caps Lock	A	S	D	F	G	H	J	K	L	:	"		Enter
↑										;	'		←
Shift		Z	X	C	V	B	N	M	<	>	?		Shift
↑									,	.	/	↑	
Ctrl	Win Key	Alt							Alt	Win Key	Menu	Ctrl	

Table 5.1. Operations

Archive / Extract (as Ok button)	Ctrl+Alt+Enter
Cancel (as Cancel button)	Shift+Backspace

Table 5.2. Options

Toggle extract to new folder on/off	Shift+Ctrl+N
Open output path when task completes	Shift+Ctrl+O

Table 5.3. Archive types

Change archive type to 7Z	Shift+Ctrl+7
Change archive type to BZip2	Shift+Ctrl+B
Change archive type to GZ	Shift+Ctrl+G
Change archive type to 7Z self extracting	Shift+Ctrl+S
Change archive type to TAR	Shift+Ctrl+T
Change archive type to ZIP	Shift+Ctrl+Z

Table 5.4. File Tools

Checksum/hash selected files	?
Compare selected object with...	=

Table 5.5. Archive layout-related (the archive list is selected)

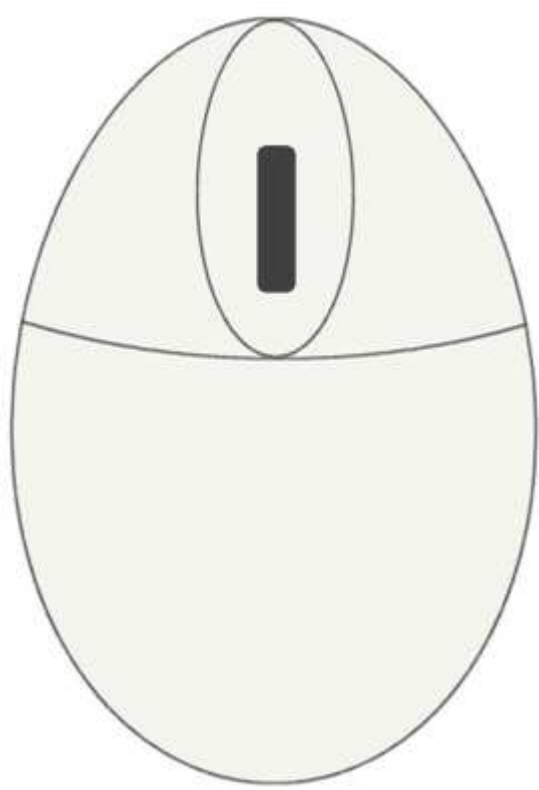
Add file(s)	Ctrl+A
Add folder	Ctrl+F
Add from search dialog (drag to archive)	(context menu only)
Load archive's layout	Ctrl+L
Save archive's layout	Ctrl+S

Open object with default application	Ctrl+O or Enter or doubleclick
Open object with...	Ctrl+W
Remove selected object from archive's layout	Cancel or Ctrl+R or Ctrl+Backspace
Refresh	F5 or refresh icon on the left of layout's title row

Table 5.6. Extract without confirmation (from browser and extraction interface)

Extract all to... (open selection dialog)	Ctrl+E
Extract all here	Ctrl+Alt+E
Extract all to Desktop	Ctrl+Shift+E

Mouse controls for archive extraction and creation



[L] **Doubleclick**: open selected object with associated application or browse folder

[R] **Rightclick**: activate “create layout” context menu;

Part III. Expert

Table of Contents

6. Save and schedule tasks	48
7. PeaLauncher	50
8. Settings	52
General (1)	52
General (2)	53
Archive manager	54
File Tools	55
Customize theme	55
Advanced settings editing	56

Chapter 6. Save and schedule tasks

From “**Console**” tab, featured in archiving/conversion and extraction UIs, it is possible to transform the task defined in the GUI interface into a command line script that can be edited (independently from the task definition in the GUI frontend), clicking on the “Click to import...” label.

If the task definition is changed in the GUI the same label can be used to refresh the task definition.

In extraction interface the “Click to import...” label can be rightclicked to modify the command line for operating on all, displayed or selected objects, if partial extraction of content is supported for the current archive type (7z, arc, rar, tar, zip...).

The task definition script can be edited, launched for testing, or saved as a text file for future use, i.e. study, scripting, analysis etc.

By default, *PeaZip* prompts to save script in its “Saved scripts” folder (unique for each user) that can be opened from Tools in main menu.

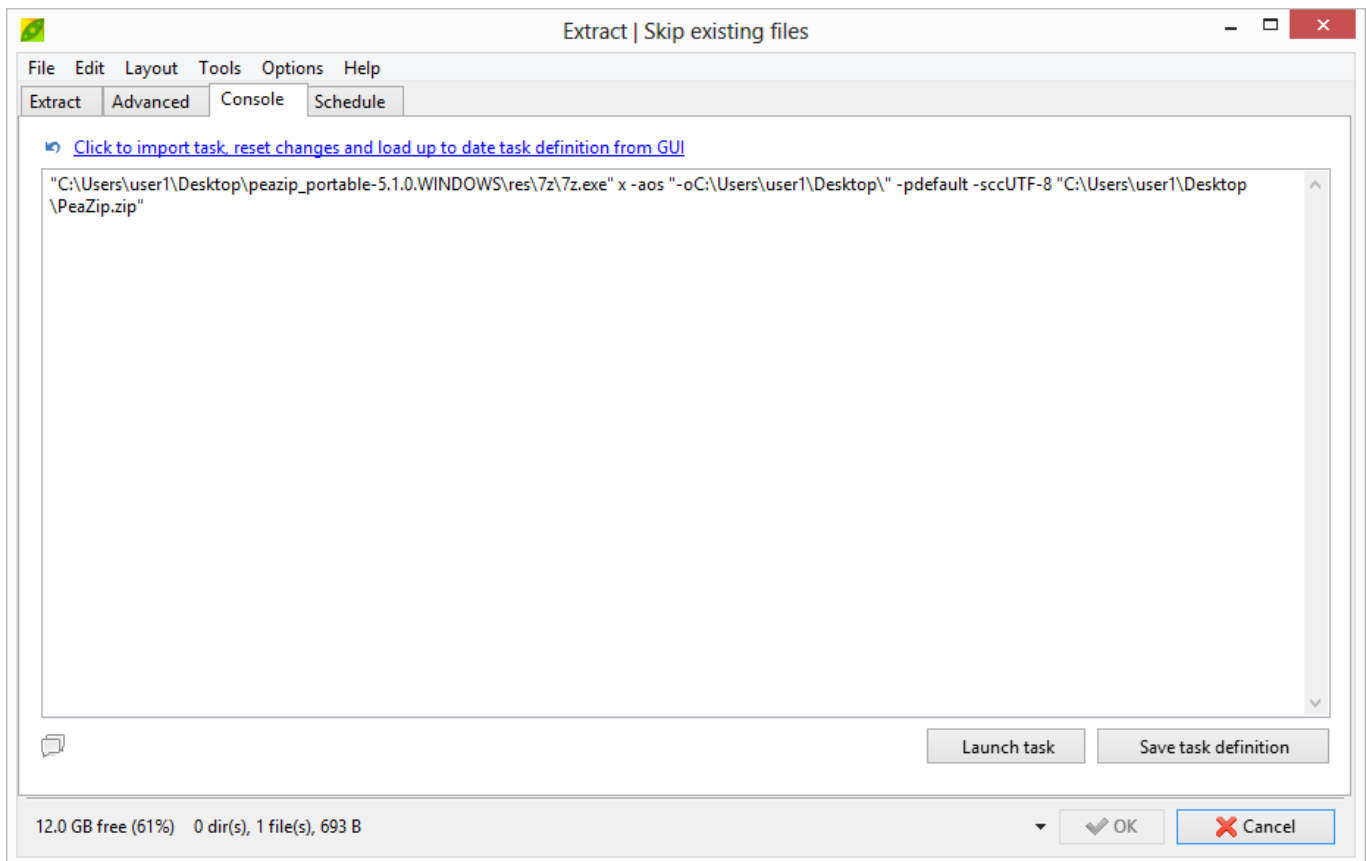


Image 17: Console tab

“**Schedule**” tab, featured in archiving/conversion and extraction UIs only on Vista and newer systems, is meant to help creating, in a single pass, a schedule to run the script generated from the task defined in the GUI interface.

The schedule is identified by a unique, editable name, which is used also as file name for the saved scheduled script.

“Manage saved scheduled scripts” opens *PeaZip*’s Saved scheduled scripts folder so script files can be edited to modify the task definition (what does the task do), copied, deleted etc.

“Task Scheduler, manage tasks saved in PeaZip branch” opens system’s Task Scheduler, *PeaZip*’s tasks are collected in *PeaZip* subfolder of scheduled tasks library (tree on the left of Task Scheduler window).

From system Task Scheduler it is possible to manage *PeaZip*’s scheduled tasks, i.e. for fine tuning the schedule (when does the task run), or deleting obsolete tasks.

Schedule dropdown menu allows to set the schedule on an hourly, daily, weekly, or monthly base, or once, starting at specified start time.

Optionally, it can be provided different user/password for running the task.

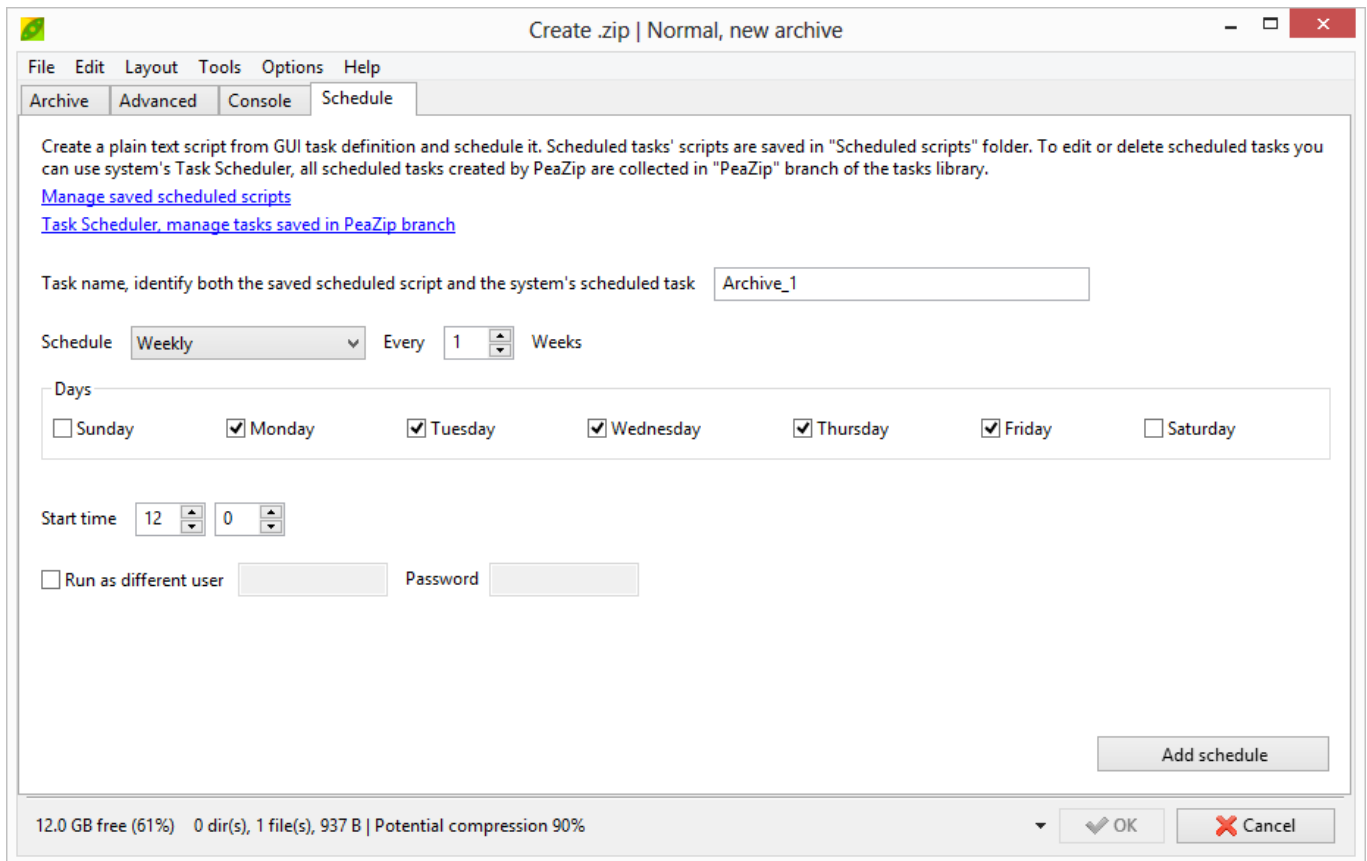


Image 18: Schedule tab

Chapter 7. PeaLauncher

PeaLauncher is the task's graphic wrapper, a component that graphically displays an underlying task performed by a console-based backend used by *PeaZip* to create, extract, test or list an archive.

By default, the window closes if no errors are detected, but remains always open for test, info and list tasks which requires the user to read the task's report.



Tip

*It is possible to always keep the task's window open after task termination, to inspect task's log and command line, selecting “Always keep open” in PeaLauncher combo box in **Options > Settings***

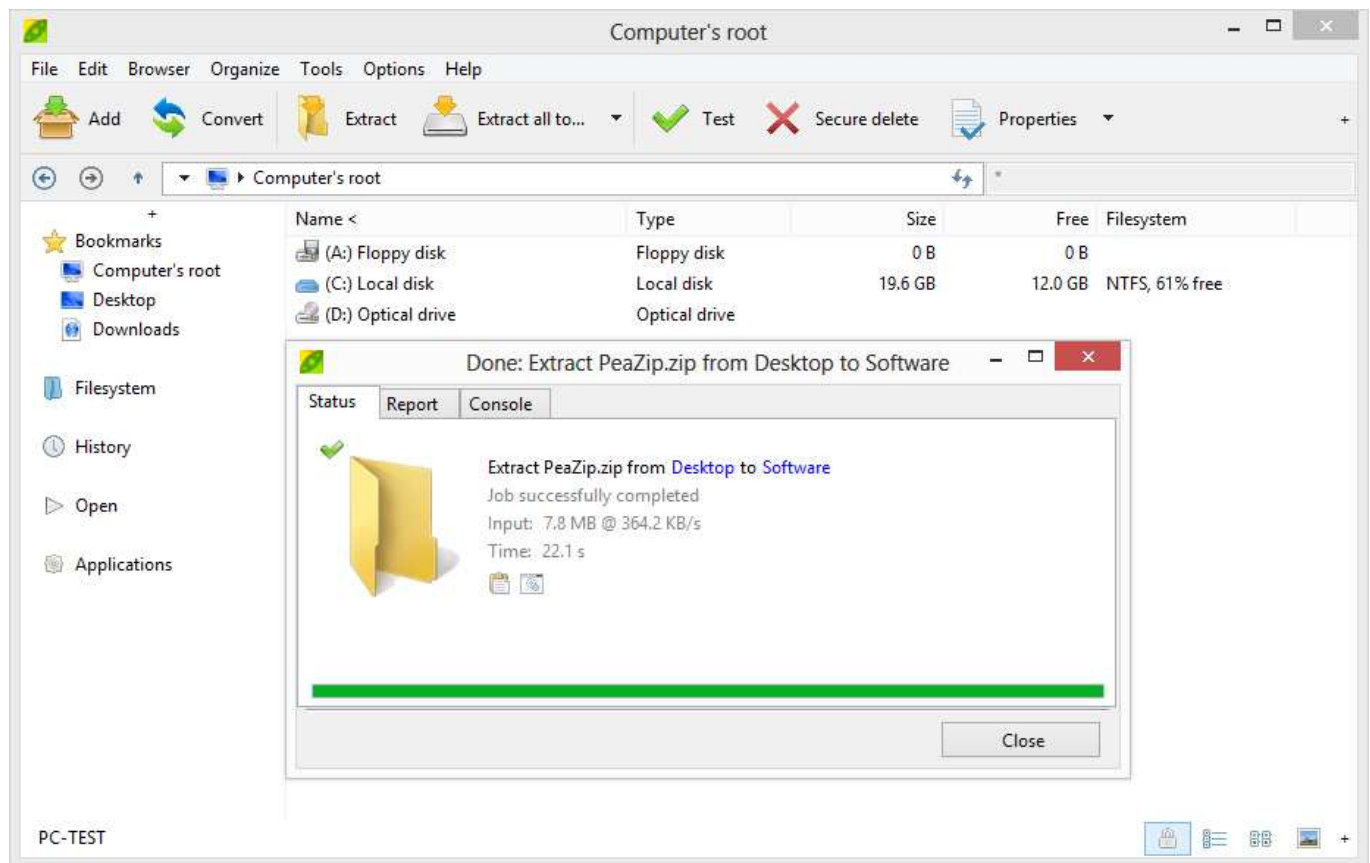


Image 19: PeaLauncher; it will auto close by default, this behaviour can be changed in PeaZip **Options > Settings** in order to keep it open, run always minimized, open output path after extraction etc...

The graphical wrapper is not invoked if tasks are running in console interface, either because they need to run in console (UNACE, UPX) or because the user selected to use “Console interface” in program's options; however list and test always run in graphic wrapper mode using pipes to give readable task log.

In console mode, the console will automatically close when task is completed without prompting any message if the task completes without errors, otherwise an error report will popup.

PeaLauncher can run also in “GUI + console” mode (see Settings [52] chapter) displaying both the graphical interface and the underlying task running in its native console interface, showing its native progress indicator, usually more detailed and reliable than GUI's one.

PeaLauncher's “Options” tab allows to set, for the current task: if the output path should be opened at the end of the task, and if to shut down the system when the task has terminated. The tab is available only while the task is running.

PeaLauncher can be invoked with no parameters, or with a single archive file as parameter (i.e. dragging an archive over the executable, or a link to PeaLauncher), to be used as a minimalist standalone extraction application.

Chapter 8. Settings

Options > Localization allows to set application's language; the application will be restarted with chosen localization.

Options > Settings allows to configure behaviour and aspect of *PeaZip* application.

[Reset] button asks for removing current *PeaZip* configuration (includes recent archives history), and separately for removing other customization files: [Applications](#) (to reset custom file associations inside *PeaZip*), [Bookmarks](#), and [Password manager](#).

The link “System integration” in the button area allows to change how *PeaZip* is integrated in the system (system's file associations, context menu and SendTo menu entries), without the need to run the setup package.



Note

This entry is available also for PeaZip Portable and allows to integrate the software in the system if desired.

To remove system integration it is possible to run this function and chose “none of the above group” for files, context menu and SendTo menu, or else running `unins000.exe` in *PeaZip*'s folder (`unins001.exe` for the installable version) for complete removal of any integration with the system.

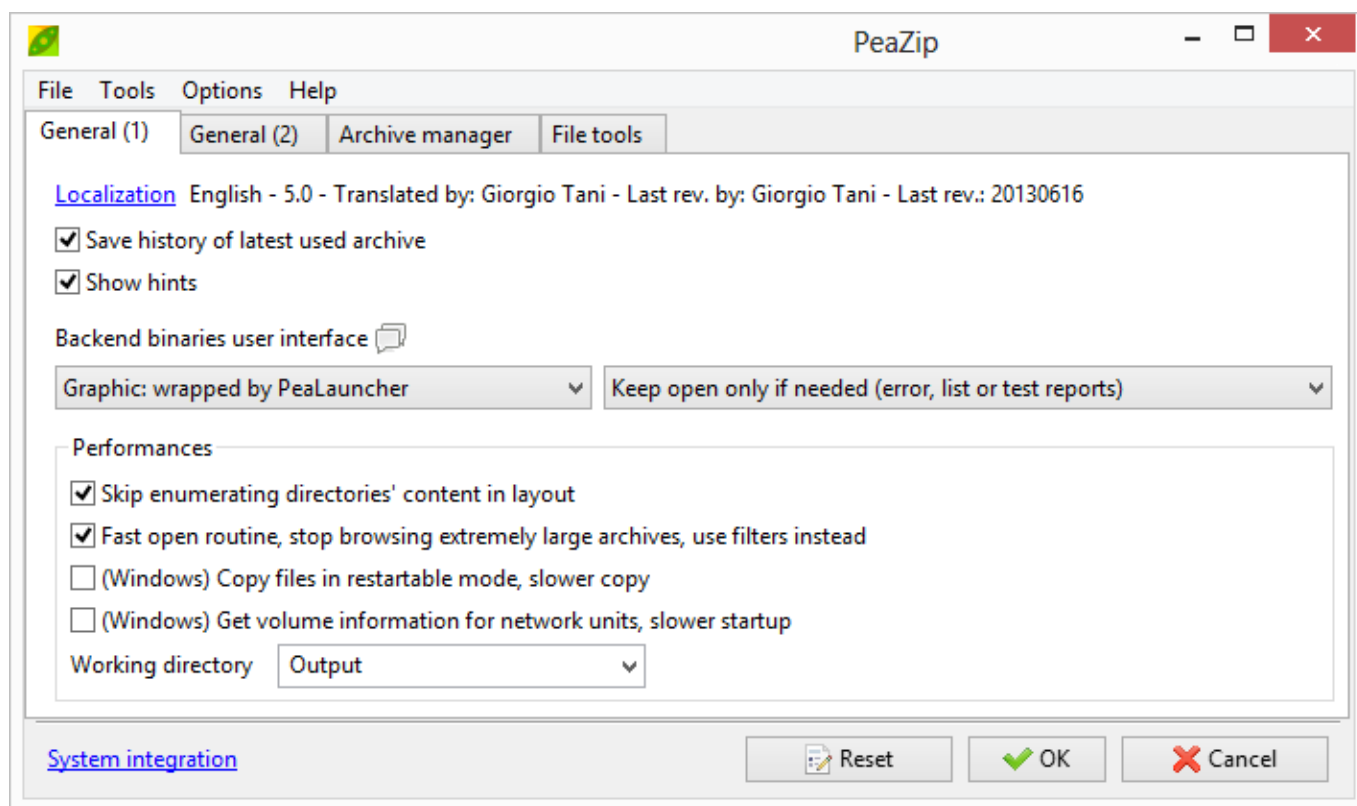


Image 20: Settings

General (1)

- Localization: *PeaZip*'s `/res/lang` subfolder, containing available language files. If the language file is correctly loaded, translator's name and translations's revision date are displayed.

- “Save history of last used archives”: on by default, allows to keep track of recently created and opened archives (**File > Recent** submenu); disabling the option the history will not be tracked, the submenu will be disabled and existing items will be cleaned closing the application. This will also clear history of latest search terms.
- “Show hints”, on by default, enable or disable application's hint popup.
- “Backend binaries user interface” allow to chose the way the backend command-line applications behaves
 - › First group: user interface type
 - in the native console interface (console mode), giving detailed and real time progress indications;
 - through a graphical wrapper using pipes (graphic, default), giving a very detailed task log and allowing to pause, resume and change priority of the task;
 - graphic + console: like the previous, but also showing native console interface: gives a responsive UI and ant the same time plenty details and real time progress indication.
 - › Second group: keep open conditions
 - always keep the window open, useful to inspect task's report and command line
 - keep open only if needed (default), keeps the window open only in case of errors, or for test, info and list tasks requiring the user to read the task's report
 - run minimized, run the task's window minimized in order to not steal focus from other activities, but show the task's window if needed (error, list/test tasks).
 - always force to close the window at task termination, regardless the kind and the result of the task
- “Performances” group settings with significant impact on program's performances
 - › “Skip enumerating directories' content in layout”: omit checking number of files and directories and file sizes contained by directory items added to archive layout (default) for start working immediately on the archive - items may be enumerated on request from layout content menu
 - › “Fast open routine, stop browsing extremely large archives, use filters instead” (default) *PeaZip* will stop representing archives's content in the GUI if the resulting list's memory stream is very large and would significantly slow down the operations. It allows to quickly opening very big and populated archives stopping preliminary operations if they are taking too much time/memory, allowing users to narrow the selection with full functional search or filter functions. Extract/list/test operations are not affected by this setting, it is applied to archive browsing only.
 - › “(Windows) Copy files in restartable mode” (off by default) when activated, on Windows, copies files with Robocopy in restartable mode, which is slower but can be useful on networks to automatically retry and continue the operation in case of errors.
 - › “(Windows) Get volume information for network units” (off by default) when activated collects size, free space and other information about network mapped units. If the network is slow or a mapped unit gets disconnected, the operation may require many seconds, so if a slowdown is detected this option is automatically unchecked, but is always possible to change the value manually as desired.
 - › “Working directory” (output folder / system's temp folder) allows to set the temporary working directory for archive creation/updating or archive preview operations, by default the output path is used to avoid copying data from system's temp or cache to intended destination - which may be on a different unit, doubling the write to disk operations.

General (2)

- Path group contains links to relevant application's paths
 - › “Desktop” contains the path of user's desktop, if correctly got from *PeaZip*; it also allows to set an arbitrary path to be used as desktop for the application, if preferred.
 - › “Configuration”, containing configuration, bookmarks, and “Open with” files, and the persistent randomness collector file

- › “PeaZip's folder”
 - › “User's SendTo menu folder” help in creating, editing and removing SendTo menu links, and to copy those entries from one user to another, or from reference examples in [SendTo.zip](#) file in program's directory.
- Reset switches:
 - › Reset History: delete records of latest paths and visited or created archives
 - › Reset Applications: delete configuration of custom editors/players/scripts/websites etc that can be associated to override default system's associations in “Open with ...” tab, and parse the system to build a list of default application for “Open with ...” menu
 - › Reset Bookmarks
 - › Reset Password Manager: delete list of saved passwords
- “Encoding” group contains character encoding related options
 - › “Encode task definition as UTF-8 text”: if checked task definition files are saved with UTF-8 encoding header, otherwise no header will be prepended to the file.
 - › Archive browser interface's character encoding option: if flagged, displays extended characters in archived object's names as UTF-8 text, otherwise replaces extended characters with “?” jolly character (as in pre-2.5 releases).
 - › `7z/p7zip -scc` allows to set the character set to be used in list operations for archive types supported through `7z/pzip` backend, default is UTF-8. If DOS charset is chosen on Windows systems, the characters are utterly converted from the console's charset to the Windows' charset, but at current level of development is successful only if system's console environment uses single-character encoding or UTF-8 (CP65001).
 - › `7z/p7zip's -mcu` if flagged allows to use UTF-8 encoding inside ZIP archives for file names that contains non-ASCII symbols



Note

replacing extended characters with “?” jolly character may improve commands syntax if, for any reason (i.e. limitations due to guest OS, archiving software creating the archive being read, or archive format limitations), the character set used while creating the archive cannot be successfully translated on the current machine opening the archive.

Archive manager

- “Default format” sets the default archive/compression type, by default last used format is kept
- “Favourite formats” allows choosing a selection of user's favourite formats to be displayed in the popup menu on the left of [OK] button in archive creation interface, and from context menus for [Add] and [Convert] buttons in the tool bar, for a quicker selection.
- “Extract” group contains additional file extraction settings
 - › “Always ignore paths...” directives: ignore paths extracts file(s) to output path not re-creating the directory structure as is in the archive, by default it is on for drag and drop and extract and open with operations. It can be fine tuned applying the directive to:
 - Drag and drop operations
 - Extract and open with... operations

- Extract displayed objects (objects shown in the current browsing or search filter)
- Extract selected objects



Tip

Hint: when extracting a folder from the archive the paths will be always preserved, overriding this option for all ignore paths switches; see “Extract archives” chapter, “Note about extraction” paragraph for more information about how extraction operations can be fine tuned and customized in *PeaZip*.

File Tools

- “Checksum/hash files” group allows to select algorithms to be used for file checksum/hash and how to display the result (hexadecimal, hex LSB, Base64).
- “Secure deletion” group allows choosing number of passes to perform to securely delete files (2-16); each pass perform: overwrite file with random data, mask original file size, rename file.

Customize theme

Themes set the default values various visual settings of the application, and for *Pea* and *PeaLauncher* executables.

Theming values can be saved in current configuration, and will override correspondent theme settings, which can be restored clicking on “Reset” link for each variable.

To prevent using too high level of transparency that will make the application unusable (up to totally invisible) there is a maximum level of transparency hard coded for the application.

From **Options > Themes**, in the “Theme” drop down menu the user can chose to use preset themes which comes packed with *PeaZip*, or a custom theme, selecting a theme package with extension `.theme.7z`.

Themes can be downloaded from “Download themes” link on the same panel, pointing to <http://www.peazip.org/peazip-add-ons.html>

The user can also create new themes clicking on “Create Theme from current settings”, it will be created a theme package on the desktop named `nameofthetheme.theme.7z`; themes can be distributed as independent packages.

To further customise themes, or to remove unwanted themes, “Manage Themes” opens the path containing themes, that is in user's application data for installable versions or inside *PeaZip*'s folder for portable versions.

Theme's graphic can be edited with any graphic files editor, and `theme.txt` can be edited as UTF-8 text.

The file `note.readme` (plain text) is inherited from the original theme, please edit it with relevant information and credits about the new theme if you plan to release it.



Note

It is recommended to not delete or modify the default theme, saved in `\PeaZip\res\themes\`, that is “seven” for Windows versions and “firecrystal” for Linux versions

It is possible to display a custom logo (up to 192 px width, 64 px height) in *PeaZip* file manager's toolbar, replacing `fm-theme.bmp` in theme's folder with a custom graphic file in **BMP** format.

Program's icons, on Windows, are stored in `\PeaZip\res\icons\` path and can be edited with a suitable editor or replaced with custom icon files; on Linux systems icons (in PNG format) are stored accordingly the distribution and the desktop environment policies, i.e. `\opt\kde3\share\icons\` or `\usr\share\icons\`

**Tip**

Hint: custom, user-provided icons and other resources can be found on <http://code.google.com/p/peazip-resources/downloads/list>

Advanced settings editing

Program's configuration is stored in `conf.txt` file, which by default is saved in `/res` folder in application's path, but an alternative location, either as absolute or relative path, can be set in second line of `altconf.txt` file in the same folder: “same” string in `altconf.txt` specify the data has to be saved in program's `res` path (best for portable packages) and “appdata” specify the data has to be saved to `%appdata%\PeaZip\` path in user profile (Windows) or `/.PeaZip/` path in user's home on Unix systems, to guarantee write access to data from current user's profile and allow different users to store different and private profiles for *PeaZip*.

In this way only the invariant data (including `altconf.txt`, binaries, graphic and default themes, language files etc), which needs to be accessed only for reading during normal program's usage, is stored in program's path, that could be even set as read-only.

All variable data files (`conf.txt`, `rnd`, `custedit.txt` and `bookmarks.txt`), which can need to be accessed for writing during normal program's usage, will be stored in `res` folder (by default) or any other path specified in `altconf.txt`.

Variable data path in use is shown on the bottom of the Settings panel; if the `altconf.txt` file is deleted *PeaZip* will rebuild a default one which sets variable data path in `/res` folder.

The user will then be able to keep separate pre-set configuration files which can be used alternatively editing the `altconf.txt` file, or to package the application to fulfill custom needs as to keep the variable and invariant data stored in separated paths.

Part IV. Additional information

Table of Contents

9. Supported formats	59
10. Customisation and scripting	61
11. Translations	63
12. Notes	65
SendTo and context menu	65
Creation of RAR archives	65
ACE archives	66
Office, Open Office, MSI and EXE files	66
UTF-8 support	66
Compilation, build and porting	67
QT issues	67
Install/uninstall on Linux	67

Chapter 9. Supported formats

See also <http://www.peazip.org/peazip-free-archiver.html>

Main families are:

Through **Pea** executable (LGPL, Windows and Linux)

- Full support
 - › [PEA](#): security focused, flexible integrity check and optional two factor authentication with passphrase and keyfile (AES256 EAX mode authenticated encryption), fast compression comparable with Zip/Gzip, native multi volume spanning.
 - › Split: compatible volume spanning (file split/join) function with optional integrity check

Through Igor Pavlov's **7z** (LGPL, Windows) and Myspace's POSIX 7z (LGPL, Linux)

- Full support
 - › [7z](#), [7z sfx](#): feature-rich archiving format, strong AES encryption, awesome compression ratio and optionally auto extracting archives (sfx, Win32 executables)
 - › Bzip2 ([BZ](#), [BZ2](#), [TBZ](#), [TBZ2](#)): single file compressor, adequate speed and good compression ratio
 - › Gzip ([GZ](#), [TGZ](#)): fast single file compressor, adequate compression ratio
 - › TAR: mainstream archiving and backup format for Unix platforms, often used to archive data to be compressed with GZip, BZip2 or other algorithms
 - › WIM (and SWM) Windows image format, Microsoft's disk image format
 - › XZ: single file compressor, based on LZMA2 algorithm, providing excellent compression ratio
 - › ZIP: mainstream archiving and compression format for Windows platform; support covers also Deflate64, LZMA and PPMd compressed archives, and AES-encrypted archives
- Browse/extract support
 - › ARJ, LHA, LZH: popular archiving format on DOS and early Windows platform
 - › CPIO, Z, TAZ, TZ: archive/compression formats for Unix platforms
 - › LZMA: single file compressed with LZMA algorithm, introduced with 7z format
 - › RAR: popular archiving and compression format, with advanced encryption and error recovery features
 - › Various archive types based on ZIP or its modifications
 - Java archives: [JAR](#), [EAR](#), [WAR](#)
 - PAK, PK3, PK4 : modified zip archives, used to store data by some popular games (like Quake3, Quake4, Doom3)
 - SMZIP
 - UP3: U3 portable application's package format
 - XPI: Mozilla package format (addons for Firefox, Thunderbird etc)
 - › MBR, FAT and NTFS filesystems
 - › Various disk images
 - ISO standard disk image format
 - IMA, IMG, IMZ images
 - UDF widespread disk image format
 - › Various executable file types
 - NSIS: Open Source Windows installer format
 - Some Windows executables
 - MSI Microsoft's proprietary installer format for Windows
 - › Various (non-archive) compressed file formats, like
 - CAB compressed archive format
 - Compound
 - Some of MS Office formats: [DOC](#), [XLS](#), [PPT](#)
 - [CHM](#), [CHW](#), [HXS](#) compressed help files
 - OpenOffice file types: container files for text, database, image and multimedia data: [ods](#), [ots](#), [odb](#), [odf](#), [odg](#), [otg](#), [odp](#), [otp](#), [odt](#), [ott](#), [oth](#), [odm](#), [oxt](#).
 - Gnumeric [.gnm](#) files
 - [SWF](#), [FLV](#)
 - › Various Linux installer formats:

- [DEB](#) (Debian based)
- [PET/ PUP](#) (Puppy Linux)
- [RPM](#) (Redhat based)
- [SLP](#) (Stampede Linux)
- › Various Macintosh formats: [DMG/ HFS](#) package/disk image format

Through **PAQ/LPAQ/ZPAQ**, Matt Mahoney et al. (GPL, Windows and Linux)

- Full support
 - › PAQ8O, ZPAQ, LPAQ8
- Read only
 - › Older PAQ8 formats F/JD/L: experimental compressor; at cost of high computing time and memory usage provides best known compression ratio for most data structures
 - › Older LPAQ1 and LPAQ5: lighter and faster version of PAQ, at the cost of some compression (single file compressor)

Through **Strip** (GNU binutils) and **UPX** (GPL Markus F.X.J. Oberhumer, Lázló Molnár and John F. Reiser)

- Compression only
 - › Strip strips symbols from executables and UPX apply compression: this allows containing the size of binaries of different types (exe, elf, etc...), which is important i.e. for distribute smaller packages; this feature is mainly oriented to developers.

Through Ilia Muraviev's **QUAD** (GPL) and **BALZ** (Public Domain)

- Full support
 - › QUAD: high performance ROLZ-based compressor which features high compression ratio and fast decompression
 - › BALZ: enhances overall performances compared to QUAD

Through Bulat Ziganshin's **FreeARC** (GPL)

- Full support
 - › FreeArc's ARC/WRC, FreeArc's sfx: experimental archive format, featuring efficient compression (high ratio and good speed), and advanced features like strong encryption and recovery records

(SEPARATE PLUGIN)

Through UNACEV2.DLL 2.6.0.0 (Windows) and UNACE (Linux): royalty-free, Marcel Lemke, ACE Compression Software

- Browse/extract support
 - › ACE: popular compression format, used mainly on Windows systems

Chapter 10. Customisation and scripting

PeaZip portable doesn't need installation and doesn't modify the host system, however program's most used functions can be integrated, under Windows, in SendTo and context menu and, under Linux, in FreeDesktop-compliant desktop environments through `.desktop` files (Gnome, KDE...) and Nautilus scripts (Gnome); examples are in [FreeDesktop_integration](#) folder included in Linux packages.

In the same way it is possible to extend the integration automatically provided by installable packages, creating quick links in system's menus or in scripts for most of the program's internal functions.

PeaZip acts as a frontend for many Open Source archiving executables, each with its own syntax developed and maintained by respective third parts Authors, see “Supported formats [59]” chapter for a comprehensive list of technologies employed in *PeaZip*.

For the syntax for each backend executable please refer to the original Authors and the original documentation (i.e. in 7-Zip's or FreeArc's documentation and websites), however one of the scopes of *PeaZip* is offering a simple and homogeneous command line interface to mask the complexity and the differences in command line syntax of underlying applications.

Quick access to most used *PeaZip*'s functions is provided passing as first parameter a constant string value identifying the quick function; those methods can be used invoking *PeaZip* from scripts or also creating a link to *PeaZip* executable with the given first parameter (on any host system).

While through *PeaZip*'s GUI it is possible to use underlying applications with great granularity (and save command lines for any further use), *PeaZip* itself is made accessible through command line to offer an easy access to most common functions.

The full list of strings accepted as quick link to *PeaZip* functions when passed as first parameter is:

- add2archive*: add to a new archive and open *PeaZip* GUI to set archive's type and options; ❶
- add2archive-add* as *-add2archive*, but add to existing archive (if found)
- add2archive-update* as previous, but update older files only
- add2pea*: add to a new `.pea` archive;
- add2crypt*: add to a new encrypted `.pea` archive;
- add2split*: raw split a single input file;
- add2wipe*: securely delete selected file(s);
- add2compare*: byte to byte compare two files;
- add27z*: add to a new `.7z` archive;
- add27zmail*: add to a new `.7z` archive and attach it to a mail (requires compatible mail client) ❷
- add2separate7z*: add each input to a separate new `.7z` archive;
- add2sfx7z*: add to a new self extracting 7z archive (`.exe`);
- add2sfx7zmail*: add to a new self extracting archive and attach it to a mail (requires compatible mail client) ❷
- add2zip*: add to a new `.zip` archive;
- add2zipmail*: add to a new `.zip` archive and attach it to a mail (requires compatible mail client) ❷
- add2separatezip*: add each input to a separate new `.zip` archive;
- ext2browse*: open (and browse if applicable) the archive(s) in *PeaZip* GUI; ❶
- ext2browsepath*: browse the selected folder (or its path, if a file is selected) in *PeaZip*
- ext2here*: extract archive(s) here;
- ext2folder*: extract archive(s) here, each in a new folder named after the archive;
- ext2full*: extract archive(s), allowing to specify i/o options, password and keyfile;
- ext2to*: extract archive(s) to specified folder;
- ext2tofolder*: extract archive(s) to specified folder, each in a new folder named after the archive;
- ext2list*: list archive(s) content, to quickly look what is in the archive;
- ext2test*: test archive(s) content;
- ext2main*: extract archives from main applications “Archive extraction” interface; ❶
- ext2commandprompt*: open the command prompt in the selected folder (or in its path, if a file is selected)
- ext2openpwtest* requires password as paramstr(2) (always delimited) and archive's full name as paramstr(3): try to list the archive and terminate with exit code 0 if archive is not encrypted, 1 if it is encrypted, 2 if it is non readable (corrupted or with encrypted file list), -1 if archive is not found.

-peazipreset: reset *PeaZip* configuration, as Options > Reset button; can resolve unexpected problems with configuration, restarting the application with factory settings

- ❶ *-add2archive*, *-ext2main*, and *-ext2browse* open the *PeaZip* GUI, to allow further user's interaction
- ❷ mail functions require a compatible mail client, like i.e. Outlook and Outlook Express, to be the default mail client of the system

Alternatively, on Windows platforms *PeaZip* can also send multiple input to a single instance through registry entries using temporary files; temp files are deleted automatically (otherwise the mechanism would not work) but in case of any kind of problem there is a reset switch in Options > Settings first tab to remove any possible leftover:

-add2multi works like *-add2archive*

-add2multi7z works like *-add27z*, but stays in the archiving interface until the user click “OK” button; it can be modified in *-add2multi7zfastest*, **normal*, or **ultra* to directly set the compression to fastest, normal or ultra levels presets (the compression method used is the one defined by the user)

-add2multizip works like *-add2zip*, but stays in the archiving interface until the user click “OK” button; likewise the previous switch it can be modified to **fastest*, **normal*, or **ultra* compression level

-add2multisfx works like *-add2sfx7z*, but stays in the archiving interface until the user click “OK” button

-ext2multi works like *-ext2main*

While the instance accepting files is open, it is possible to continue adding input from the same directory selecting objects and using context menu's entry, as an alternative to dragging the object to the application window that might be less handy if the desktop is crowded by windows.

An example of command line syntax may be: *peazip -add2zip file1 file2 directory3*

which will add specified objects (in the example *file1* and *file2*, and all content of *directory3*) to a *.zip* archive, auto named after the 1st object (in this case will be named *file1.zip* and will be saved in the same path of *file1*); using *-add27z* instead of *-add2zip* will perform the same task but will result in a *.7z* archive (*-add2pea* will result in a *.pea* archive, *-add2sfx7z* will result in a self extracting executable and so on).

Another example may be: *peazip -ext2here archive1*

which will extract *archive1* in the same path; using *-ext2folder archive1* will be extracted to a new folder named “*archive1*” in the same path of “*archive1*”.

Chapter 11. Translations

Lazarus development environment has migrated to UTF-8 for LCL (GUI-related libraries), see UTF-8 support status in *Lazarus* and *PeaZip* documentation, so the application's user interface can now be translated in any language.

Language files are UTF-8 encoded text files which can be edited using any suitable text editor.

To create a new translation file you can:

1. copy `en.txt` (in *PeaZip*'s path in `/res/lang` subfolder) or any other language file, if you prefer starting from another language, to a new file;
2. edit lines 2 to 6 of the document to enter language name (both in English and in the original language for better readability), *PeaZip*'s **version (major.minor) the translation is aimed to**, translator's and last revisor's name and last revision date;
3. translate the text after the “variable_name: ” part in “`=== PeaZip text group ===`” AND “`=== PeaLauncher text group ===`” sections of the file (don't move or remove lines, don't change the “variable_name: ” part);
4. optionally, translate the mini-tutorial after “`=== about text group ===`” line (free editing, it is loaded and displayed “as is” as application's mini-tutorial).

In “Translations” directory, there is a package named `peazip-x.y.about_translations.zip` containing a spreadsheet file to help in creating and maintaining localizations, simply compiling column D of the spreadsheet.

The spreadsheet shows variable name (column B), corresponding text string in english (column C) and a blank, yellow column (D) for typing the translated text strings.

On the right, a column E (blue) will show the “variable_name: ” part assembled with the translated string; the content of this area can be copied and paste to replace the text in “`=== PeaZip text group ===`” and “`=== PeaLauncher text group ===`” sections (the spreadsheet features TWO pages, one for each of the two groups).

Lines must be pasted in the original order (it is sufficient to sort them by column F).

After column F are featured all currently available translations, in order to help translators more proficient in other languages than English, and to help to spot out what localizations need to be updated.

At each version all language files are mass-updated, with missing text lines in English; to update a localization, it's enough to update the English text lines.

For a better result it is also recommended to check all the language file to see if the update is coherent with linguistic style used by the translator of the current version.

For languages spoken in different ways in different countries (i.e. English, Spanish, Portuguese...) it is recommended to fork the translation, creating i.e. en-us, pt-br etc

PeaZip can load out of order (not optimal for performances) language files for older or newer versions.



Important

the spreadsheet contains 3 pages, “PeaZip text group”, “PeaLauncher text group”, and “About text group”: all pages need to be completed and pasted (column E, for first two pages) in the language file; the “About text group” can be freely edited.

Translated language files can be sent to `<giorgio.tani.software@gmail.com>`, to be evaluated for inclusion in future updates or publication in <http://sourceforge.net/projects/peazip/files/Translations/>.

All translated language files should be considered as released under GFDL, GNU Free Documentation License, as they have to be considered derivate work from the application's language file which is released under GFDL.

Configuration, themes and bookmarks files, saved archive layouts, task logs and exported command lines are saved, for *PeaZip* 2.2 and beyond, as UTF-8 encoded text.

Older archive layouts (saved as ANSI text by previous versions of *PeaZip*) can still be used by *PeaZip*.

Chapter 12. Notes

SendTo and context menu

Launching the program through links in SendTo , or any other link to the application, or through scripts, allows receiving multiple input arguments for each instance of the program, while entries in Windows' context menu, by design, can receive a single input argument for each instance.

PeaZip's Context Menu items can handle multiple input argument through a temporary files list, the temporary files are automatically deleted (otherwise the mechanism would not function), and in any case it is possible to force deleting them in **Options > Settings > Reset peazip-tmp** (or resetting *PeaZip*).

For a similar Windows' design choice, on pre-Windows 7 systems, program's entries in Windows context menu are not grouped in a submenu since it will involve much more complex approach than creating separate registry entries; registry method is now (for Windows 7 and later) recommended over the previous COM method.

SendTo menu are simple link files, they can be freely renamed, or have the icon changed, and can be copied or moved to one user to another as needed, they are located in `C:\Documents and Settings\username\SendTo` (Windows XP) or `C:\Users\username\AppData\Roaming\Microsoft\Windows\SendTo` (Vista/7), assuming C: as system's disk.

All available SendTo links are featured in `SendTo.zip` file in *PeaZip's* path, more can be built using the switches explained in “Customisation and scripting [61]”

Context menu entries are written in the registry; the exact location, different in 7 and previous systems, can be read in the InnoSetup scripts in “`installer`” dir of source package. They can be modified using a registry editor, but manually modifying registry is not generally recommended to users.

Creation of RAR archives

No free software application can create RAR archives, unless the operation is performed invoking *WinRar* binary itself, because the RAR format is proprietary, moreover, the UnRAR license explicitly disallows to reverse engineering the file format definitions implemented to build functional RAR creation software.

With *WinRar* installed you can use *PeaZip's* “Custom” archive type interface to use `rar.exe` to create RAR format archives through *PeaZip's* GUI: chose “Custom” format in compression dialog and the first time go to “Advanced” tab to tell *PeaZip* how to use the executable

1. locate where the `rar.exe` executable is in your system, in “Executable” field
2. write `a` (which stands for create archive) in “Parameters” field
3. select the second entry in “Syntax” dropdown menu: “parameters, output, input”

Now any time you will select “Custom” format compression *PeaZip* will automatically use the syntax

```
rar.exe a nameofthearchive nameoftheinputfiles
```



Note

Please note that `rar.exe` command line syntax is not a 1:1 replacement of *WinRar* features, especially worth of notice is that “`a`” command creates the archive storing full paths (and creation storing relative paths option is not even featured) while *WinRar* GUI application creates by default archives storing relative paths.

ACE archives

Unace may require to interactively respond to some warning messages extracting archives (i.e. if an object with this name already exists in the output path), or to enter a password for handling an encrypted archive. If the console is not available for user's input (as when calling *unace* through *gwrap* executable), the feedback cannot be entered and the application would freeze waiting for feedback.

To avoid this possible stall situation *unace* extraction and test operations are always called in console mode by *PeaZip*, while listing operations, as for all other formats, are always launched in graphical mode of operation to offer better output information handling (and since naming conflict and password request conditions cannot be encountered in list mode).

To run test on ACE archive it's recommended to save the command line as text and then execute it as command line or as script, in order to don't get the console's window closed after the operation completes.

Please note that from *PeaZip* 1.9.1 the program's base packages contain only open source software, so handling ACE archives will require installing a separate plugin (see application's website) as described in "Plugin" chapter. Trying to open an ACE archive without the plugin installed will result in a message to remember the UNACE plugin is required.

Office, Open Office, MSI and EXE files

Files in those formats are actually containers from different resource objects which can be browsed and extracted by *PeaZip*. However since those file types are more commonly archived rather than handled as archives themselves, *PeaZip* by default don't handle them as archives unless they are explicitly opened with "Open archive" function so double clicking on files of those types within *PeaZip* starts the associated application rather than opening them as archives.

UTF-8 support

From version 2.2 UTF-8 character encoding is supported, allowing to properly handle extended characters in filenames and to deploy localization of *PeaZip*'s user interface text in any language.

It should be noted however that, at present level of development of *Lazarus/ FreePascal* project, most of the underlying *FreePascal* file-handling routines are still ANSI-only, meaning the UTF-8 strings *PeaZip* uses internally still have to be translated to ANSI strings to be passed to some functions.

As *PeaZip* aims 1) to stay cross-platform and 2) to bridge the gap between GUI and console worlds, allowing to easily export tasks as command lines, UTF-8 support is utterly complicated because each system / desktop environment / widgetset *PeaZip* is ported to has different levels and ways of supporting UTF-8 encoding for different APIs, for system pipes, for command line interpreters etc. This issue currently causes:

- *PeaZip* cannot browse files/dirs containing characters which are not featured in host system's character's set (they will be replaced by ? wildcard) due to the need of ANSI translation for strings passed to some FPC routines;
- decoding of names of archived objects containing extended characters, from version 3.0.1, is supported for file types handled using 7z/p7zip backend (using backend's `-sccUTF-8` option). However in some cases, due to the archive format specifications, or to issues of the software used to create the archive being examined, or due to charset conversion problems between the source system and the target system that is reading the archive, the conversion of character in filenames inside the archive may fail anyway. Optionally extended characters can be set to be always replaced by jolly "?" character to avoid possible issues between archive's and system's character encodings on some special cases.

In any case the ability of operate (test, create, extract etc) on the whole archive is not affected by this issue

¹Lazarus IDE: <http://www.lazarus.freepascal.org/>

Compilation, build and porting

PeaZip, *Pea* and *Gwrap* are written in *FreePascal* (highly compatible with Delphi and ObjectPascal languages) and require Lazarus IDE ¹ to be compiled; Windows setup scripts (*.iss* files) are developed using *Inno Setup*.

To compile *PeaZip* binaries open the *.lpi* file of the desired binary (i.e. *peach.lpi* for *peazip* binary) and select “build all”. *FreePascal* supports multiple widgetsets (Win32, WinCE, GTK1, GTK2, Qt, Carbon, fpGUI) to allow compilation of GUI applications for the various supported systems and to create different “flavours” of the application for platforms supporting multiple widgetsets (i.e Linux).

PeaZip's sourcecode is cross platform, platform-specific code portions are contained in conditional compilations blocks. Deploying the application to other targets than MSWINDOWS, LINUX and BSD may require adaptation of those platform specific areas (and possibly other fine-tunings).

PeaZip will also need various backend compression and archiving applications to be reachable in expected directories within the application's path, please refer to the structure of any of the precompiled packages, either installable or portable, to see what third parts binaries must be included, and refer to respective Authors for ports of those utilities.

Being *PeaZip* programmed as frontend/backend application, missing or unwanted backend binaries can be omitted, at the cost of losing the ability of handling supported formats; for the same reason, backend binaries can be freely replaced with 64 bit counterparts or with updated versions (which will work fine as long as they follow the same syntax).

PeaZip code should be fairly easy to port on Delphi and other Pascal dialects; the underlying crypto library ² is explicitly written to be portable to most or all Pascal dialects, however due to some ASM parts some of its features may be x86 processor specific.

From version 2.5 *PeaLauncher* was extended to be also a standalone extraction application; this could make porting easier at least for basic extraction features, since its user interface is more simpler than *PeaZip*'s one.

QT issues

Currently, *Lazarus/FreePascal* IDE support for Qt widgetset, on Linux platform, is less mature than support for GTK2. It means under some circumstances some unexpected behaviours may show, due to issues between the version of Qt *PeaZip* is compiled for and the one featured by the host system; know issues are:

- in some cases the drag and drop from system to the Qt version of the application will not work
- in some cases Qt *PeaZip* will miss the close window icon; the application can be closed using **File > Quit (Ctrl+Q)** in main menu
- in some cases *PeaZip* will run only starting it with *-style=cleanlooks* parameter (this is not inherited when *PeaZip* starts other processes, which consequently may not run)

Experiencing problem with Qt version, it is recommended to use GTK2 version, that can run on KDE as well (as Qt version can run on Gnome as well) because *PeaZip* is meant to be as desktop and widgetset independent as possible.

Install/uninstall on Linux

On Linux systems, *PeaZip* installer automatically create menu entries for KDE (on most versions); to add *PeaZip* to Gnome menu copy the “*Archiving*” folder placed in *PeaZip/Freedesktop_integration/nautilus-scripts* to system's Nautilus script's folder (in most versions open Scripts menu in system's context menu, and select “Open script's folder”).

²crypto library: <http://www.wolfgang-ehrhhardt.de/>

PeaZip is meant to be desktop independent as possible, so it is not limited to be used under KDE and Gnome, and does not requires different packages to run on different desktop environments.

On *PeaZip*'s official website are featured generic Linux packages, meant to be compatible with as many distributions and versions as possible, providing the system supports the widgetset (GTK2 ❶ or Qt ❷) and the installer format, in example:

DEB ❸: Debian, Ubuntu/Kubuntu, Knoppix, ...

RPM: Fedora, Mandriva, SUSE, Red Hat, ArkLinux, ...

TGZ: Slackware based.

TAR.GZ (*PeaZip* Portable) does not need to be installed, so it is the recommended package if you just want to test the application. It can be used on any Linux family extracting the package and running *peazip* binary in program's directory.

Third parts packages explicitly targeted to a specific distribution/version are listed on the download page below the official generic packages, those packages are highly recommended for best integration with a specific Linux distribution and version. If a package does not run on a specific system please launch *peazip* binary on a console to get a more detailed error report.

- ❶ On some Linux distributions the GTK2 version may require to install some components of gtk/gdk libraries, like `libgtk_pixbuf`, those components are quite common and can be usually found in repositories of each distribution.
- ❷ Qt widgetset packages requires Qt 4.3.4 or more recent, and needs `libqt4intl.so` installed in `/usr/local/lib` or equivalent directory (copy the file and run `ldconfig`; it is done automatically in installable packages), such as `/usr/lib` or `/usr/lib32` on some 64 bit distributions. A copy of `libqt4intl.so` is available in *PeaZip*'s directory, `./usr/local/share/PeaZip/` for the installable packages.
- ❸ DEB packages reports (all) for architecture check, so can be installed on 32 and 64 bit systems (providing that ia-32 libs are available).

Note for third parts packagers: those packages can be transformed in i386 DEB if desired; i386 DEB can anyway be installed on 64 bit systems using

```
dpkg -i --force-architecture
```

Please note that ia32-libs are required to run any 32 bit binary on 64 bit systems.

PeaZip binaries are currently compiled for 32 bit, you will need *Lazarus/ FPC* if you want to compile them from sources. All backend compression/extraction “engines” (pea, p7zip, *paq, freearc etc) are compiled for 32 bit, please refer to respective Authors for source packages (all are released under OSI approved Open Source licenses) if you want to recompile them.

Index

C

context menu, 61, 65

R

RAR, 65

S

SendTo, 52, 52, 54, 54, 61, 65, 65, 65, 65

U

UnRAR, 65

W

WinRar, 14, 65